



ANNUAL SAFETY AND SECURITY REPORT 2023

Submitted October 2024

TRINE UNIVERSITY



In compliance with the Jeanne Clery Disclosure of Campus Security Policy and Crime Statistics Act (Clery Act), and the safety and fire-related requirements of the Higher Education Opportunity Act, the Office of Student Services produces an Annual Security and Fire Safety Report. This report includes policy statements and specific information regarding the University's procedures, practices, and programs concerning safety, security, and fire safety (e.g. policies for responding to emergency situations and sexual offenses). This report also includes three years of crime statistics for specific types of crimes that occurred on campus; in certain non-campus buildings or property owned or controlled by the University; and on public property on or immediately adjacent to each of Trine University's campuses. In addition, included are three years of fire statistics for Trine's campuses with on-campus student housing.

We urge members of the university community to use this report as a guide for safe practices on and off campus. Campus Safety will send an email to every enrolled student and active employee on an annual basis notifying them that the Trine University Annual Security and Fire Safety Report is available to be viewed. This email includes a brief overview of the contents of this report and the web address where the report is located. The report is available online at <https://www.trine.edu/campus-life/campus-safety/index.aspx>. You may request a physical copy of the report be mailed to you by emailing campussafety@trine.edu.

Table of Contents



Trine University	4	Dating Violence, Domestic Violence, Sexual Assault and Stalking	20
Message from the VP for Student Affairs.....	5	Title IX	20
Message from the Director of Campus Safety.....	6	Key Sexual Offenses According to Indiana State Law	21-26
Public Safety & Institutional Assurance.....	6	Prevention and Awareness Programs	27-28
Trine’s Campus Safety Department	7	Safe and Positive Options for Bystander Intervention	29
Enforcement Authority	7	Risk Reduction	30
Working Relationship with State & Local Enforcement Agencies.....	7	Healthy, Unhealthy, and Abusive Relationships...31	
Reporting Crimes and Other Emergencies	8	Procedures a Victim Should Follow If a Crime Occurs	32
General Reporting Guidelines	8	Reporting the Incident.....	33
Emergency Blue Light Phones.....	9	Importance of Preserving Evidence	33
Indiana Life Line Law.....	9	Medical and Counseling Services	34
Response to Reports	9	Involvement of Law Enforcement.....	35
Campus Security Authorities.....	9-10	Protection Orders	35
Pastoral and Professional Counselors	10	Written Notification to Student and Employee Victims	35
Voluntary, Confidential Reporting	11	Support, Remedial, and Protective Measures	36
Daily Crime Log	11	Institutional Disciplinary Procedures	37
Campus-Wide Notifications	12	Confidentiality and Privacy	37
Timely Warnings (Crime Alerts).....	12	Definitions of Crimes and Geography	38-40
Emergency Notifications.....	13	Preparation of Disclosure of Crime Statistics ... 41	
Emergency Response and Evacuation	14	Disclosure of Annual Crime Statistics	41
Missing Student Notification	15	Crime Statistics.....	42-46
Security of and Access to Campus Facilities	16	Obtaining Registered Sex Offender Information.....	47
Campus Residence Access.....	16	Fire Safety	48
Security Considerations for the Maintenance of Campus Facilities.....	16	Campus Housing/Building Evacuation.....	48
Crime Prevention and Security Awareness	17	Residential Life Health and Safety Standards....	48
Alcohol and Drugs	18	Residential Life Prohibited Items	49
Alcohol Consumption and Underage Drinking....	18	Fire Statistics	50
Illegal Drugs	18	Conclusion	51
Silent Witness Tip Line and Website.....	19		
Trine University’s Good Samaritan Policy.....	19		
Alcohol and Drug Education Programs.....	19		

Trine University

Our story is a powerful one. For more than 135 years, Trine University has produced graduates who have literally gone out and changed the world for the better through their knowledge, innovation and work. And it's a story that continues to evolve each day. You'll find excellence in academic programs that offer hands-on experience with real-world projects, in expert faculty mentors who will take the time to care about our students' education and life goals, in state-of-the-art facilities, and in alumni who impact their communities, nation and world.

Trine University is a growing institution with a rich heritage of academic excellence and tradition. With enrollment that has more than tripled since 2000, Trine University remains a remarkably creative, innovative campus with a vibrant student life. Expert, caring faculty and staff prepare Trine students to lead, succeed and serve.

More information about Trine University including its history, mission and vision may be found at <https://www.trine.edu/about/>





A Message from the Vice President for Student Affairs / Dean of Students

Trine University is proud of the educational, social and recreational environment we provide students, from career-focused academic programs and personal attention from caring, expert faculty and staff to exceptional residence facilities and a vibrant campus life. However, none of these would be possible if our campus community did not feel safe to learn, live and enjoy their college experience.



While it may seem like the small-town area around our main campus would provide little cause for concern, crime can unfortunately take place in any setting. We must remain vigilant to ensure the safety of people and property in Angola as well as at our urban education centers.

Thankfully, Trine University's Campus Safety Department is up to the task. Featuring leadership that boasts extensive law enforcement experience and members who undergo constant training to stay up-to-date on their responsibilities, Campus Safety keeps our community secure. They also do far more than enforce regulations, offering many services to our campus community and treating all its members with respect.

We hope this annual report, compiled in compliance with the Jeanne Clery Disclosure of Campus Security Policy and Crime Statistics Act (Clery Act), provides reassurance about our safety efforts at Trine University. If you have any questions about the data in this report, or about safety measures at Trine, please feel free to reach out to me or to the Director of Campus Safety.

Sincerely,

Cisco Ortiz

Vice President for Student Affairs / Dean of Students

The annual report is provided in compliance with the Jeanne Clery Disclosure of Campus Security Policy and Crime Statistics Act (Clery Act) and the Higher Education Opportunity Act (HEOA). It provides safety and security information concerning each of Trine's campuses.



A Message from the Director of Campus Safety

We are pleased to provide you with this annual report detailing public safety at Trine University's main campus and each of its education centers. In addition to data on campus incidents, you'll find information about Trine University's many efforts to keep our community safe.



The vast majority of our students, employees and visitors do not have to be concerned with safety outside of common-sense measures such as locking doors, storing valuables, etc. The Campus Safety team makes safety our primary concern so that you don't have to. Besides remaining diligent in our duties, we work to keep informed about the latest techniques and technologies that can be implemented to provide a safe environment to learn, work and live at Trine University.

However, this doesn't mean we can do it all alone. We appreciate your partnership by reporting anything suspicious and by looking out for your friends and colleagues. As always, if there is anything we can do for you, contact us any time at [260.316.1877](tel:260.316.1877).

Sincerely,

Stuart Hamblen

Director of Campus Safety

Public Safety & Institutional Assurance

At Trine, our job is to provide you with the opportunity to receive a quality education. Our top priority is to keep you safe and protect your life and property. We take pride and great responsibility in doing so. By proactively engaging in activities that promote security awareness and crime prevention, we strive to be a safe place to learn, work and live.

Campus Safety encompasses campus protection including first aid, CPR and emergency response procedures. Our officers are on duty 24 hours a day, seven days a week, 365 days a year. They are equipped with radios and cell phones, and have immediate communication with students and local emergency services.

Campus Safety has also incorporated an emergency alert text system that alerts students and staff to campus emergencies. Campus Safety is an extension of the Office of Student Affairs.



**Contact Campus
Safety**

260.316.1877



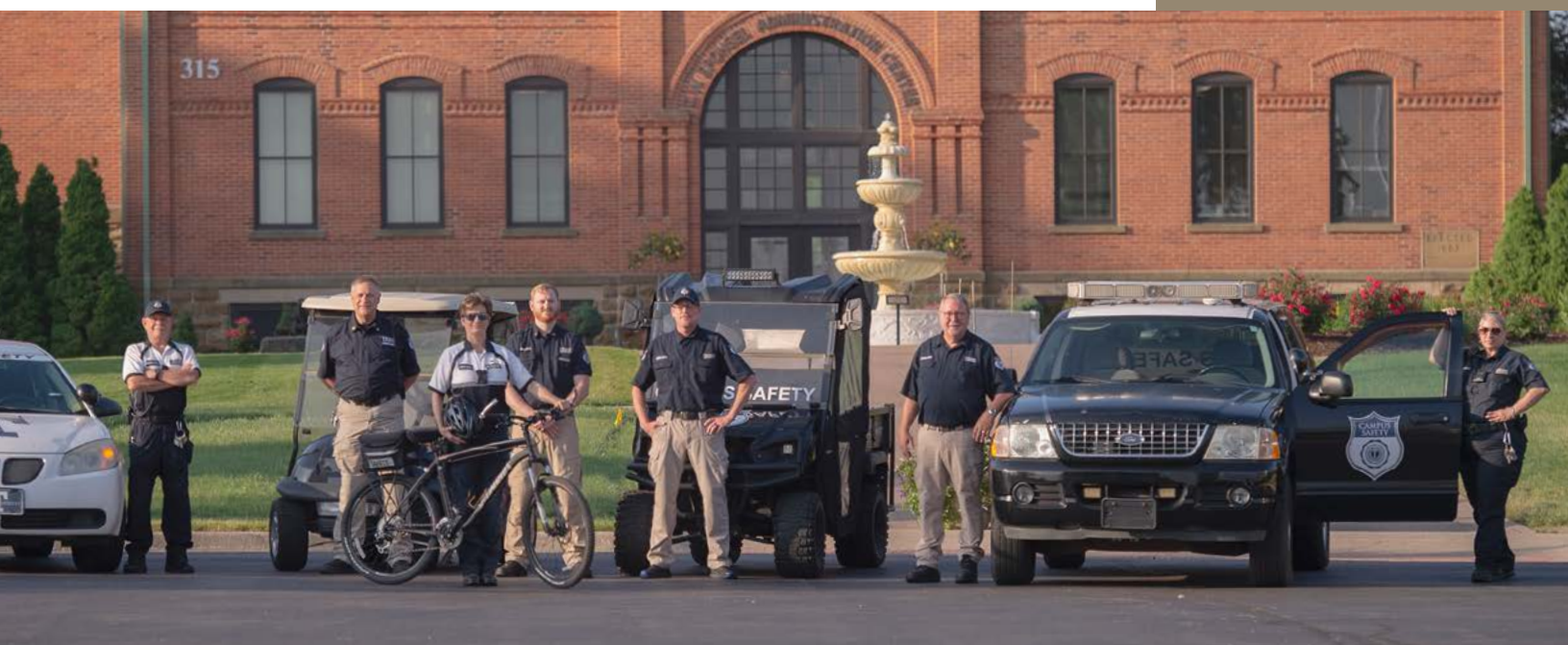
Trine's Campus Safety Department

Enforcement Authority

Trine University maintains its own Campus Safety Department that reports to the Vice President for Student Affairs. The Campus Safety Department is a service department, without police powers, with full-time representatives available to serve campus 24 hours per day, 365 days per year. The Trine University Campus Safety Officers use advanced equipment, techniques, and current technology to perform their duties. The jurisdictional boundaries of the Campus Safety Department include all Trine University owned facilities. Campus Safety Officers have the authority to ask persons for identification and enforce community and residential standards.

Working Relationship with State and Local Enforcement Agencies

The Campus Safety Department works with the Angola Police Department, Steuben County Sheriff's Office, Indiana State Police, and the Federal Bureau of Investigation. Additionally, meetings are held with the local School Safety Committee which is comprised of local law enforcement agencies, emergency management agencies, and local school officials. Criminal incidents are referred to the local police who have jurisdiction on the campus. Trine University encourages law enforcement agencies to inform the University of any Reported Criminal Activities at all sites affiliated with the University or with University-recognized organizations on and off campus. There is no written memorandum of understanding between Trine University Campus Safety and the local law enforcement agencies.



Reporting Crimes and Other Emergencies



General Reporting Guidelines

Community members, students, faculty, staff, and guests are strongly encouraged to report all crimes and public safety incidents immediately.

For emergencies, dial 911 first. For campus-related issues or non-emergencies, please contact Trine University's Campus Safety department at 260.316.1877.

In the event of an emergency on campus, use one of the eleven blue light emergency stations to reach the Steuben County 911 dispatch center. Alternatively, you can contact the Angola Police Department at 260.665.2121.

For incidents occurring off-campus, report them to local law enforcement by calling **911** or visiting the Angola Police Station or Steuben County Sheriff's Office.

Additionally, any crimes should be reported to Trine University's Campus Safety Director. This is crucial for the annual crime statistics and timely warning notifications, as well as for addressing incidents related to sexual violence, domestic violence, dating violence, sexual assaults, and stalking.

Use the following numbers for routine calls:

Angola Police Department

202 W Gilmore St.

Angola, IN 46703

260.665.2121

Trine University Office of Student Affairs

720 Thunder Drive

Angola, IN 46703

260.665.4168

Steuben County Sheriff's Office

206 East Gale Street

Angola, IN 46703

260.668.1000

Trine University Campus Safety

720 Thunder Drive

Angola, IN 46703

260.316.1877

Cameron Hospital

416 E. Maumee St

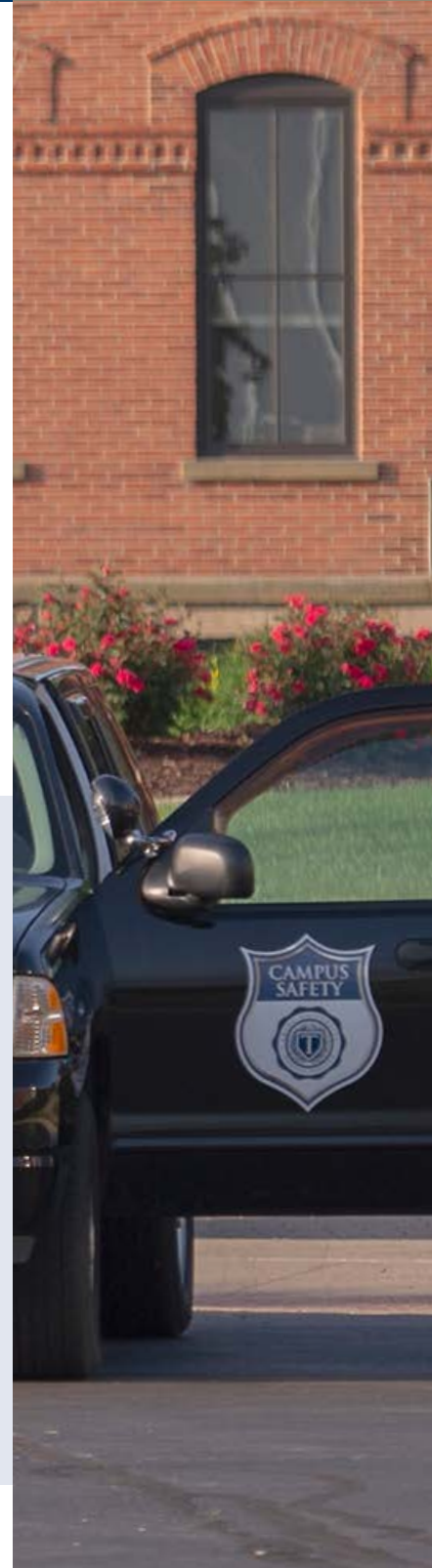
Angola, IN 46703

260.665.2141

Trine University Tip Line

260.665.4700

<https://www.trine.edu/silent-witness/>





Emergency Blue Light Phones

Emergency blue light phones have been placed at strategic locations around campus. Once activated, a large blue strobe light flashes at the top of the phone tower, and allows for an immediate two-way communication between local 911 dispatch emergency services and the person using the blue light emergency stations. If you need assistance, see something suspicious, or see someone else who may need assistance, you should activate the blue light phone.

Indiana Lifeline Law

Under Indiana's Lifeline Law (IC 7.1-5-1-6.5), students are afforded amnesty against certain charges for alcohol related crimes in connection with a report of a medical emergency, including sexual assault, so long as they cooperate with law enforcement at the scene.

Response to Reports

Depending on the nature of a particular report, Campus Safety will respond to the caller's location or ask the caller to report to the Campus Safety Office and/or Office of Student Services to file an incident report.

As required by law or policy, an incident report may be forwarded to other University offices for potential action, which may include:

- **University Title IX Coordinator**
- **Academic Affairs**
- **Deputy Title IX Coordinator**
- **Vice President for Student Affairs**
- **Human Resources**

Campus Security Authorities

"Campus Security Authority" is defined as "An official of an institution who has significant responsibility for student and campus activities, including, but not limited to, student housing, student discipline, and campus judicial proceedings". The regulations that govern the Clery Act (34 CFR 668.46) more specifically defines a CSA:

- A campus police department or a campus security department of an institution.
- Any individual or individuals who have responsibility for campus security but who do not constitute a campus police department or a campus security department, such as an individual who is responsible for monitoring entrances into institutional property.
- Any individual or organization specified in an institution's statement of campus security policy as an individual or organization to which students and employees should report criminal offenses.
- An official of an institution who has significant responsibility for student and campus activities, including, but not limited to student housing, student discipline, and campus judicial proceedings.
- Pastoral and professional counselors are not considered a campus security authority when acting in their roles as a pastoral or professional counselor.





Campus Security Authorities at Trine University

Campus Security Authorities, that have a criminal activity reported to them, are responsible for reporting the crime to the Campus Safety Department in a timely manner. The following positions are considered CSAs at Trine University:

- Director of Campus Safety
- Campus Safety Officers
- Vice President of Student Affairs/Dean of Students
- University Vice Presidents
- Director of Housing/Residence Life
- Assistant Director of Residence Life
- Housing Operations Coordinator
- Resident Directors/Resident Assistants
- Director of Accessibility Services
- Assistant Vice President for Athletics
- Assistant Athletic Directors
- Athletic Coaches
- Assistant Vice President for Human Resources/Title IX Coordinator
- Student Organization/Greek Life Advisors

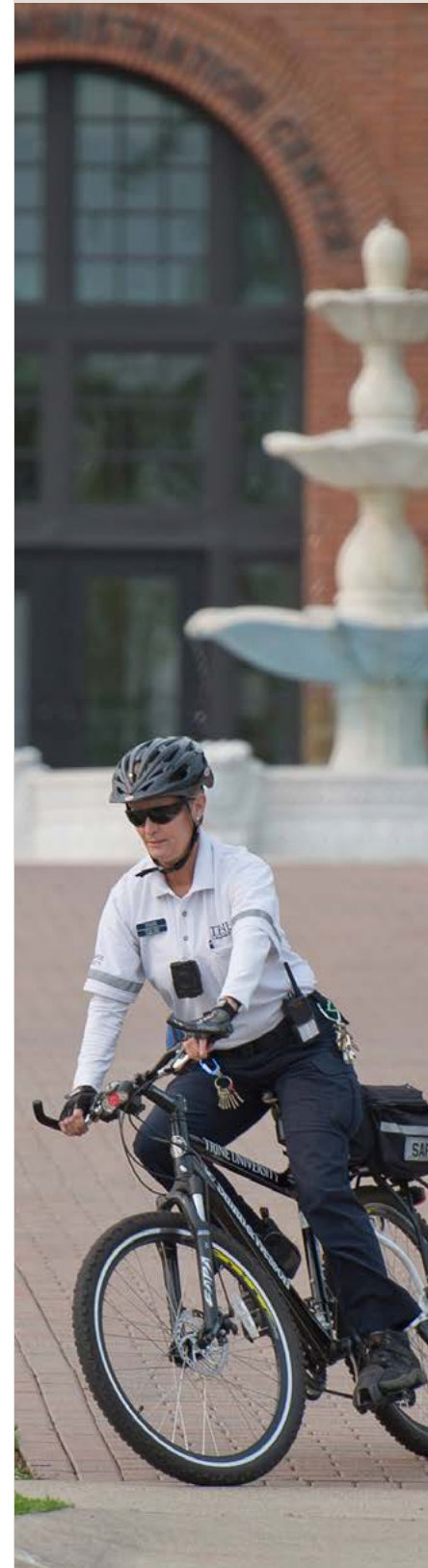
Pastoral and Professional Counselors

Pastoral Counselor

An employee of an institution, who is associated with a religious order or denomination, recognized by that religious order or denomination as someone who provides confidential counseling and who is functioning within the scope of that recognition as a pastoral counselor.

Professional Counselor

An employee of an institution whose official responsibilities include providing psychological counseling to members of the institution's community and who is functioning within the scope of their license or certification.





Voluntary, Confidential Reporting

If you are a victim of a crime and do not wish to pursue action within the University system or the criminal justice system, you may still want to consider making a confidential report. The purpose of a confidential report is to comply with your wish to keep the matter confidential while taking steps to ensure the future safety of yourself and others. With such information, the University can keep an accurate record of the number of incidents involving students, determine where there is a pattern of crime with regard to a particular location, method, or assailant, and alert the campus community to potential danger. Reports filed in this manner are counted and disclosed in the annual crimes statistics for the institution.

As a result of the negotiated rulemaking process which followed the signing into law, the 1998 amendments to 20 U.S.C. Section 1092 (f), clarification was given to those considered to be campus safety authorities. Campus "Pastoral Counselors" and Campus "Professional Counselors," when acting as such are not considered to be a campus security authority and are not required to report crimes for inclusion in the annual disclosure of crime statistics. As a matter of policy, they are encouraged, if and when they deem it appropriate, to inform persons being counseled of the procedures to report crimes on a voluntary basis for inclusion into the annual crime statistics.

Daily Crime Log

The Trine University Campus Safety Department maintains a daily crime log, which is available for review upon request, during normal business hours, 8 a.m. to 5 p.m. at the Campus Safety Department, 720 Thunder Drive, Angola, Indiana. The log includes all reported crimes that occurred on campus, in or on non-campus buildings or property, on public property within the campus or immediately adjacent to and accessible from the campus, and within the patrol jurisdiction of the Campus Safety Department.

The Trine University crime log for the most recent 60-day period is open to public inspection, upon request, during normal business hours of 8 a.m. to 5 p.m., at Campus Safety Office, 720 Thunder Drive, Angola, IN. Requests for records older than 60 days should be made to the Director of Campus Safety.

The crime log contains the following information:

- The nature of the crime.
- The date the crime was reported.
- The date and time the crime occurred.
- The general location of the crime.
- The disposition of the complaint, if known.
- The names of crime victims will be removed for public inspection. Trine University may temporarily withhold information in some cases if there is clear and convincing evidence that the release of information would:
 - Jeopardize an ongoing investigation.
 - Jeopardize the safety of an individual.
 - Cause a suspect to flee or evade detection.
 - Result in the destruction of evidence.

Information will be disclosed once the adverse effect is no longer likely to occur.

Campus-Wide Notification



Timely Warning (Crime Alerts)

The purpose of a timely warning is to alert the campus community to the occurrence of a crime that poses an ongoing threat to the campus community and/or to heighten safety awareness of students and employees in a manner that will aid in the prevention of similar crimes. In certain situations, the Director of Campus Safety will make a decision, in consultation with University administration as needed, whether to disclose the incident through a public notice to the community using the **ReGroup Mass Notification System** alert system and/or other electronic means.

The circumstances of any situation coupled with the safety evaluation of the threat potential will dictate the need and manner for the issuance of a campus timely warning. In general, whenever there has been a report of a violent crime, a major property crime, or other significant criminal event on or adjacent to campus and the Senior Vice President/Chief Operating Officer, the Vice President for Student Affairs and the Director of Campus Safety is of the opinion that the safety of the campus community may be at risk, a timely warning will be issued.



The timely warning will include the following information, if available:

- Immediate safety/security actions the campus community should take or initiate
- Description of the incident (type of crime, time, date and location)
- Physical description of the offender, if available
- Connection (if any) to previously reported incidents
- Description of any injuries or use of force, if relevant
- Crime Prevention Tips
- Emergency contact information (phone numbers and web sites)
- Date the campus crime alert bulletin was issued

The Senior Vice President/Chief Operating Officer, the Vice President for Student Affairs, and the Director of Campus Safety will work closely with the Vice President for Marketing and Communications to provide information regarding threats to the safety of persons on campus. Marketing and Communications personnel will assist in creating and disseminating timely warnings for the Trine University campus.



EMERGENCY NOTIFICATIONS

Emergency Notifications

Trine University attempts to provide a safe and secure environment for students, staff, and visitors. However, it is only possible to maintain safety and security when every student and staff member takes an active part in the effort.

At Trine University, people move throughout the campus freely. A key part of Trine University's campus preparedness is the University's emergency warning notification system. The multi-layered communication approaches we have in place will help inform students, faculty, staff, and guests of emergency incidents.

We use the following concepts to initiate our warning notification:

- **Alarms:** Audible alarms and/or enunciated messages are issued inside buildings.
- **Carillon System:** Audible messages from exterior speakers that can be heard throughout the entire campus.
- **Weather Siren:** Steuben County Emergency Management System operates weather sirens on University property.
- **Text messages: ReGroup Mass Notification System.** The Trine University faculty, staff and students may sign up via the Trine University website to receive emergency notification text messages. In an effort to keep parents informed about important information in the event of a campus emergency, Trine University allows students to register contact information for parents through the ReGroup Mobile Safety Alert System.
- **E-mail:** An e-mail will be sent out to all people with a Trine University e-mail address.
- **Trine University Home Page:** The Trine University home page www.trine.edu is the focal point of the most complete information in all campus related emergencies.
- **Residence Life Staff:** University residences have procedures for alerting people in individual halls via megaphones.
- **Local Media:** Local media is monitored and utilized for announcements and alerts.

The Senior Vice President/Chief Operating Officer, the Vice President for Student Affairs, and the Director of Campus Safety will work closely with the Vice President for Marketing and Communications to provide information regarding threats to the safety of persons on campus. Marketing and Communications personnel will assist in creating and disseminating emergency notifications and alerts for the Trine University campus.

After an incident, the Senior Vice President/Chief Operating Officer, the Vice President for Student Affairs, or their designated representatives and any other affected departments/individuals will conduct an incident critique. The incident critique is documented in the After-Action Review Improvement Plan and is used to refine procedures and train officials.



Emergency Response & Evacuation

The University Safety Committee is responsible for emergency preparedness and planning activities on the Trine University campus. The University Safety Committee partners with the Steuben County Emergency Management Agency and various other community agencies in developing the Trine University Emergency Operations Manual. The manual includes procedures and emergency action plans in a variety of areas, such as severe weather, active shooter and medical emergencies. Evacuation route maps are posted in hallways throughout all campus buildings.

Announced and/or unannounced drills are scheduled and executed to test evacuation and emergency procedures.

Some tests, such as fire alarm evacuations, are conducted bi-annually.

Weather Warnings

Severe thunderstorm and tornado warnings are issued when conditions exist and are reported by the National Weather Service. Warnings are sent out through our emergency notification system listed in the Emergency Notifications section of this report.

Evacuation Routes

Evacuation route maps are posted in all residence halls. In the event of a fire or emergency, the maps provide evacuation routes and a safe meeting location for all facilities.





Missing Student Notification

If a member of the University community has reason to believe that a student who resides in on-campus housing is missing, they should immediately notify Campus Safety at [260.316.1877](tel:260.316.1877) or the Office of Student Services at [260.665.4168](tel:260.665.4168). The Campus Safety or Student Services staff will generate a missing person report and initiate an investigation.

In addition to registering a general emergency contact, students residing in on-campus housing have the option to confidentially identify an individual to be contacted by Trine University in the event the student is determined to be missing for more than 24 hours. A student who wishes to identify a confidential contact can do so through the student registration in the Registrar's Office. A student's confidential contact information will be accessible only by authorized campus officials and law enforcement in the course of the investigation.

After investigating the missing student report, should University officials determine that a student is missing and has been missing for more than 24 hours, the Angola Police Department will be contacted and the student's emergency contact will be notified. If the missing student is under the age of 18 and is not an emancipated individual, Trine University will notify the student's parent or legal guardian immediately after University officials have determined that the student has been missing. In addition, all emergency contacts designated by the student will be contacted.





Security of and Access to Campus Facilities

Trine University is open to the public. During business hours, most buildings are open to students, faculty, staff, and guests. During evenings and weekends, certain buildings are open. Some buildings may stay open 24 hours or have hours that vary at different times of the year. Some academic buildings must remain unlocked until late at night due to evening classes, student and faculty research projects, and special events. Campus Safety secures buildings nightly as determined by the event schedule. Custodians are instructed to report any suspicious situations to Campus Safety immediately.

Campus Residence Access

Special Considerations for campus residence access include:

- Residence halls are secured **24 hours a day**.
- Key and key card access.
- Video recording and monitoring in some buildings.
- Resident Assistant walk-through hours.
- Campus Safety patrol.

Security Considerations for the Maintenance of Campus Facilities

Campus Safety officers patrol campus buildings and grounds regularly. If officers notice any unsafe conditions, they report the issue to the appropriate campus department, such as Campus Operations, Residence Life, etc.

A strong commitment to campus safety and security is maintained through regular inspections of the following:

- Interior lighting is checked daily by Campus Operations.
- Exterior doors and locking hardware are checked daily by Campus Operations and Campus Safety.
- Exterior lighting is monitored nightly by Campus Safety.
- Blue Light Emergency Stations are surveyed monthly for deficiencies.



CAMPUS OPERATIONS

Emergency requests and repairs (building problems such as water leaks, sewer, power outage, etc.) **should be reported to Campus Operations by phone immediately.**

DAYTIME
7:30 a.m. - 3:30 p.m.
260.665.4155

AFTER HOURS
Call Campus Safety at
260.316.1877

Crime Prevention and Security Awareness



The following are ways that Trine University fosters safety and awareness:

Resident Director/Resident Assistant Student Patrol: Trained students patrol on a nightly basis through the residence halls to look for vandalism, disorderly conduct or suspicious activity. Residence Halls are secured 24 hours a day.

Safety Services: Campus Safety Officers offer services to provide safety for students, employees and guests who walk on campus between dusk until dawn.

Publications: The Campus Safety Office, Health Department and Counseling Services distribute publications that address problems such as date rape, alcohol abuse and theft.

Lighting: The campus is routinely surveyed to ensure that exterior areas are adequately lit at night. Trees and shrubs along walkways are trimmed as needed.

Safety Committee: The Safety Committee helps establish programs and services to improve safety across campus, and to reduce health, safety and environmental risks. The Safety Committee members include; Assistant Vice President for Human Resources, Assistant Vice President of Campus Operations, Science Department Faculty, Director of Campus Safety, Engineering Department Faculty, the Vice President for Student Affairs, and the Vice President of Finance. This committee and the additional sub groups within the committee meet as needed to discuss concerns.

ACT: The Assessment Care Team meets weekly to identify and intervene with students of concern. This team comprises Trine employees from Academics, Athletics, Counseling Services, Residence Life, Campus Safety and the Office of Student Affairs.

Office of Student Affairs: Staff members in this office provide a variety of services to students, including victim assistance, confidential counseling and information about Trine University resources. Matters related to student conduct are the responsibility of the Judicial Review Committee.

Alcohol and Drug Abuse Prevention: Alcohol and Other Drugs is a reality-driven online course designed to educate students on the risks of abusing alcohol and other drugs and to teach successful strategies for handling dangerous situations related to these substances. The course features four modules: Your GPA, Your Brain, Your Peers, and Your Life. Each section provides extensive, research-backed evidence of the detrimental effects alcohol and other drugs can have and how social skills and interactions can help reduce the harm associated with these substances.





Alcohol and Drugs

The possession, use, sale, manufacturing, or distribution of any controlled substance or alcohol on the Trine University campus is governed by the student handbook – community standards, and the laws of the State of Indiana. Trine University disapproves of the use of any unlawful alcohol and the abuse of other intoxicating substances by its students.

Alcohol Consumption and Underage Drinking

Alcohol is prohibited on University property and at University sponsored events (with the exception of University sanctioned events). Any student found to be in possession of alcohol on campus and/or who exhibits alcohol-induced behavior on campus is subject to disciplinary sanctions. Confiscated alcohol will be permanently lost to the student and will be disposed of by a member of Campus Safety and/or a member of the Office of Student Affairs professional staff.

Students are prohibited from the use, possession (including intoxication), distribution, manufacture, or being in the knowledgeable presence of alcohol on Trine University campuses/sites. Exceptions to this policy are students of legal age at a University-sponsored function where the serving of alcohol has been approved by the Vice President for Student Affairs, the Vice President of Administration/Chief of Staff, the President, and/or their representatives.

State law prohibits the consumption or possession of alcoholic beverages by persons younger than 21 years old. The law also prohibits persons 21 years or older from providing alcoholic beverages to minors. A person misrepresenting his or her age to obtain alcoholic beverages is in violation of the law.

Violators of alcohol policies are subject to the provisions of applicable state and federal laws as well as Trine University disciplinary action.

Use or Abuse of Drugs

Indiana state law, federal law and Trine University policy prohibit the use, possession, sale, manufacture or distribution of Controlled Substances or other illegal drugs without a valid prescription. Use, sale, manufacturing or distribution of synthetic cannabinoids is also prohibited.

Likewise, use or possession of drug paraphernalia is also prohibited. Under federal law the term drug paraphernalia means “any equipment, product or material of any kind which is primarily intended or designed for use in manufacturing, compounding, converting, concealing, producing, processing, preparing, injecting, ingesting, inhaling, or otherwise introducing into the human body a controlled substance.”



Students are prohibited from using, manufacturing, possessing, selling and/or distributing illegal drugs on and off campus. Any student who intends to or does violate this policy is subject to disciplinary sanctions, up to and including dismissal, and may be prosecuted by law. Students likewise are prohibited from using, possessing, selling and/or distributing prescription drugs or placebos, unless the prescription drug is prescribed by a licensed health care provider to the student and is used only by that student.

Controlled Substances or illegal drugs seized from students will be permanently lost to the student and will be properly destroyed by Campus Safety.

Violators of drug policies are subject to the provisions of applicable state and federal laws as well as Trine University disciplinary actions.

Information regarding drug possession and use may be found in the Trine University Student Handbook: <https://trine.edu/campus-life/documents/trine-student-handbook--aug-2023.pdf>

Trine University's Good Samaritan Policy

The University is committed to helping ensure that students obtain timely medical or professional assistance for themselves and their peers when needed. The Good Samaritan policy is designed to help in this effort. There may be times when individual students, on and off campus, may need assistance from medical or other professional personnel. Trine University wants to minimize any hesitation that students or student organizations might have in obtaining help due to the related concern that their own behavior might be a violation of community or residential standards. While standards violations cannot be overlooked, Trine University will take into consideration the positive impact of reporting an incident for the welfare of other students when determining the appropriate response for said violations. Any possible negative consequences for the reporter of the problem will be evaluated against the possible negative consequences for the student who needed intervention.

Alcohol and Drug Education Programs

The Office of Student Affairs has partnered with Vector Solutions to provide online training resources covering various areas of substance use/abuse prevention and safety. Alcohol and Drug Abuse Prevention and Alcohol and Other Drugs is a reality-driven online course designed to educate students on the risks of abusing alcohol and other drugs and to teach successful strategies for handling dangerous situations related to these substances. The course features four modules: Your GPA, Your Brain, Your Peers and Your Life. Each section provides extensive, research-backed evidence of the detrimental effects alcohol and other drugs can have and how social skills and interactions can help reduce the harm associated with these substances.

During National Alcohol Education Week, a variety of programs are offered to educate students about alcohol consumption which are presented by staff, students and student organizations.

Silent Witness Tip Line & Website

The Trine University Campus Safety Department has installed an anonymous silent witness tip line and website. Those who want to report any illegal drug or crime activity should dial **260.665.4700** or simply extension **4700** from any campus phone. You may also visit: <https://www.trine.edu/silent-witness/>. The form will be sent to the Director of Campus Safety.



Dating Violence, Domestic Violence, Sexual Assault and Stalking

Trine University is committed to providing a learning, working and living environment that promotes personal integrity, civility, and mutual respect in an environment free of discrimination on the basis of sex. Sex-based discrimination includes all forms of sexual misconduct, including sexual or gender-based harassment, sexual assault, domestic violence, dating violence, and stalking. As a result, Trine University issues this statement of policy to inform the community of our comprehensive plan addressing sexual misconduct, educational programs, and procedures that address sexual or gender-based harassment, sexual assault, domestic violence, dating violence, and stalking, whether the incident occurs on or off campus and when it is reported to a university official. In this context, Trine University prohibits the offenses of sexual or gender-based harassment, sexual assault, domestic violence, dating violence, and stalking and reaffirms its commitment to maintain a campus environment emphasizing the dignity and worth of all members of the university community.

For a complete copy of Trine University's Title IX Sexual Harassment Policy visit — <https://www.trine.edu/about/titleix/index.aspx>

The University has designated Ms. Jamie Norton as its Title IX Coordinator, and as the person to whom questions, concerns, or complaints regarding Title IX and the University's non-discrimination policies should be directed. Ms. Norton may be contacted as follows:

Jamie Norton

Assistant Vice President for HR /University Compliance
Trine University
Shambaugh Hall, Room 322
Angola, IN 46703
260.665.4847
nortonj@trine.edu

The University has also designated the following persons as Title IX Deputy Coordinators to whom questions or complaints may be directed:

Cisco Ortiz

Vice President for Student Affairs/
Dean of Students
Trine University
University Center – Student Services
Angola, IN 46703
260.665.4171
ortizf@trine.edu

Jacqueline Delagrang

Assistant Professor
Trine University
Trine Online
Angola, IN 46703
260.665.4187

Stephanie George

Director of HR
Trine University
Shambaugh Hall, Room 322
Angola, IN 46703
260.665.4991

Dr. Mike Black

Dean of Student Success
Trine University
University Center – Student Success
Angola, IN 46703
260.665.4171

Evan Gustin

Assistant Professor
Trine University
Ford Hall, Room 118
Angola, IN 46703
260.665.4136



Key Sexual Offenses According to Indiana State Law

Domestic Violence & Dating Violence

The following crimes and definitions under the Indiana Criminal Code most closely represent the crimes of “domestic violence” and “dating violence.”

Crimes involving domestic or family violence (IC 35-31.5-2-76)

Sec. 76. “Crime involving domestic or family violence” means a crime that occurs when a family or household member commits, attempts to commit, or conspires to commit any of the following against another family or household member:

- (1) A homicide offense under IC 35-42-1.
- (2) A battery offense under IC 35-42-2.
- (3) Kidnapping or confinement under IC 35-42-3.
- (4) Human and sexual trafficking crimes under IC 35-42-3.5.
- (5) A sex offense under IC 35-42-4.
- (6) Robbery under IC 35-42-5.
- (7) Arson or mischief under IC 35-43-1.
- (8) Burglary or trespass under IC 35-43-2.
- (9) Disorderly conduct under IC 35-45-1.
- (10) Intimidation or harassment under IC 35-45-2.
- (11) Voyeurism under IC 35-45-4.
- (12) Stalking under IC 35-45-10.
- (13) An offense against family under IC 35-46-1-2 through IC 35-46-1-8, IC 35-46-1-12, IC 35-46-1-15.1, or IC 35-46-1-15.3.
- (14) A crime involving animal cruelty and a family or household member under IC 35-46-3-12(b)(2) or IC 35-46-3-12.5.

Family or household member (IC 35-31.5-2-128)

Sec. 128. (a) An individual is a family or household member of another person if the individual:

- (1) is a current or former spouse of the other person;
- (2) is dating or has dated the other person;
- (3) is or was engaged in a sexual relationship with the other person;
- (4) is related by blood or adoption to the other person;
- (5) is or was related by marriage to the other person;
- (6) has or previously had an established legal relationship:
 - (A) as a guardian of the other person;
 - (B) as a ward of the other person;
 - (C) as a custodian of the other person;
 - (D) as a foster parent of the other person; or
 - (E) in a capacity with respect to the other person similar to those listed in clauses (A) through (D); or
- (7) has a child in common with the other person.

(b) An individual is a family or household member of both persons to whom subsection (a)(1), (a)(2), (a)(3), (a)(4), (a)(5), (a)(6), or (a)(7) applies if the individual is a minor child of one (1) of the persons.



Domestic Battery (IC 35-42-2-1.3)

Sec. 1.3. (a) Except as provided in subsections (b) through (f), a person who knowingly or intentionally:

- (1) touches a family or household member in a rude, insolent, or angry manner; or
- (2) in a rude, insolent, or angry manner places any bodily fluid or waste on a family or household member; commits domestic battery, a Class A misdemeanor.

(b) The offense under subsection (a)(1) or (a)(2) is a Level 6 felony if one (1) or more of the following apply:

- (1) The person who committed the offense has a previous, unrelated conviction:
 - (A) for a battery offense included in this chapter;
 - (B) for a strangulation offense under IC 35-42-2-9; or
 - (C) in any other jurisdiction, including a military court, in which the elements of the crime for which the conviction was entered are substantially similar to the elements of:
 - (i) a battery offense included in this chapter; or
 - (ii) a strangulation offense under IC 35-42-2-9.
- (2) The person who committed the offense is at least eighteen (18) years of age and committed the offense against a family or household member in the physical presence of a child less than sixteen (16) years of age, knowing that the child was present and might be able to see or hear the offense.
- (3) The offense results in moderate bodily injury to a family or household member.
- (4) The offense is committed against a family or household member who is less than fourteen (14) years of age and is committed by a person at least eighteen (18) years of age.
- (5) The offense is committed against a family or household member of any age who has a mental or physical disability and is committed by a person having the care of the family or household member with the mental or physical disability, whether the care is assumed voluntarily or because of a legal obligation.
- (6) The offense is committed against a family or household member who is an endangered adult (as defined in IC 12-10-3-2).

(c) The offense described in subsection (a)(1) or (a)(2) is a Level 5 felony if one (1) or more of the following apply:

- (1) The offense results in serious bodily injury to a family or household member.
- (2) The offense is committed with a deadly weapon against a family or household member.
- (3) The offense results in bodily injury to a pregnant family or household member if the person knew of the pregnancy.
- (4) The person has a previous conviction for a battery offense:
 - (A) included in this chapter against the same family or household member; or
 - (B) against the same family or household member in any other jurisdiction, including a military court, in which the elements of the crime for which the conviction was entered are substantially similar to the elements of a battery offense included in this chapter.



- (5) The offense results in bodily injury to one (1) or more of the following:
- (A) A family or household member who is less than fourteen (14) years of age if the offense is committed by a person at least eighteen (18) years of age.
 - (B) A family or household member who has a mental or physical disability if the offense is committed by an individual having care of the family or household member with the disability, regardless of whether the care is assumed voluntarily or because of a legal obligation.
 - (C) A family or household member who is an endangered adult (as defined in IC 12-10-3-2).
 - (D) The offense described in subsection (a)(1) or (a)(2) is a Level 4 felony if it results in serious bodily injury to a family or household member who is an endangered adult (as defined in IC 12-10-3-2).
 - (E) The offense described in subsection (a)(1) or (a)(2) is a Level 3 felony if it results in serious bodily injury to a family or household member who is less than fourteen (14) years of age if the offense is committed by a person at least eighteen (18) years of age.
 - (F) The offense described in subsection (a)(1) or (a)(2) is a Level 2 felony if it results in the death of one (1) or more of the following:
 - (1) A family or household member who is less than fourteen (14) years of age if the offense is committed by a person at least eighteen (18) years of age.
 - (2) A family or household member who is an endangered adult (as defined in IC 12-10-3-2).

Battery (IC 35-42-2-1)

Sec. 1. (a) As used in this section, “public safety official” means:

- (1) a law enforcement officer, including an alcoholic beverage enforcement officer;
- (2) an employee of a penal facility or a juvenile detention facility (as defined in IC 31-9-2-71);
- (3) an employee of the department of correction;
- (4) a probation officer;
- (5) a parole officer;
- (6) a community corrections worker;
- (7) a home detention officer;
- (8) a department of child services employee;
- (9) a firefighter;
- (10) an emergency medical services provider;
- (11) a judicial officer;
- (12) a bailiff of any court; or
- (13) a special deputy (as described in IC 36-8-10-10.6).

(b) As used in this section, «relative» means an individual related by blood, half-blood, adoption, marriage, or remarriage, including:

- (1) a spouse;
- (2) a parent or stepparent;
- (3) a child or stepchild;
- (4) a grandchild or step-grandchild;



- (5) a grandparent or step-grandparent;
- (6) a brother, sister, stepbrother, or stepsister;
- (7) a niece or nephew;
- (8) an aunt or uncle;
- (9) a daughter-in-law or son-in-law;
- (10) a mother-in-law or father-in-law; or
- (11) a first cousin.

(c) Except as provided in subsections (d) through (k), a person who knowingly or intentionally:

- (1) touches another person in a rude, insolent, or angry manner; or
- (2) in a rude, insolent, or angry manner places any bodily fluid or waste on another person; commits battery, a Class B misdemeanor.

(d) The offense described in subsection (c)(1) or (c)(2) is a Class A misdemeanor if it:

- (1) results in bodily injury to any other person; or
- (2) is committed against a member of a foster family home (as defined in IC 35-31.5-2-139.3) by a person who is not a resident of the foster family home if the person who committed the offense is a relative of a person who lived in the foster family home at the time of the offense.

(e) The offense described in subsection (c)(1) or (c)(2) is a Level 6 felony if one (1) or more of the following apply:

- (1) The offense results in moderate bodily injury to any other person.
- (2) The offense is committed against a public safety official while the official is engaged in the official's official duty.
- (3) The offense is committed against a person less than fourteen (14) years of age and is committed by a person at least eighteen (18) years of age.
- (4) The offense is committed against a person of any age who has a mental or physical disability and is committed by a person having the care of the person with the mental or physical disability, whether the care is assumed voluntarily or because of a legal obligation.
- (5) The offense is committed against an endangered adult (as defined in IC 12-10-3-2).
- (6) The offense:
 - (A) is committed against a member of a foster family home (as defined in IC 35-31.5-2-139.3) by a person who is not a resident of the foster family home if the person who committed the offense is a relative of a person who lived in the foster family home at the time of the offense; and
 - (B) results in bodily injury to the member of the foster family.

(f) The offense described in subsection (c)(2) is a Level 6 felony if the person knew or recklessly failed to know that the bodily fluid or waste placed on another person was infected with hepatitis, tuberculosis, or human immunodeficiency virus.

(g) The offense described in subsection (c)(1) or (c)(2) is a Level 5 felony if one (1) or more of the following apply:

- (1) The offense results in serious bodily injury to another person.
- (2) The offense is committed with a deadly weapon.
- (3) The offense results in bodily injury to a pregnant woman if the person knew of the pregnancy.



- (4) The person has a previous conviction for a battery or strangulation offense included in this chapter against the same victim.
- (5) The offense results in bodily injury to one (1) or more of the following:
 - (A) A public safety official while the official is engaged in the official's official duties, unless the offense is committed by a person detained or committed under IC 12-26.
 - (B) A person less than fourteen (14) years of age if the offense is committed by a person at least eighteen (18) years of age.
 - (C) A person who has a mental or physical disability if the offense is committed by an individual having care of the person with the disability, regardless of whether the care is assumed voluntarily or because of a legal obligation.
 - (D) An endangered adult (as defined in IC 12-10-3-2).

(h) The offense described in subsection (c)(2) is a Level 5 felony if:

- (1) the person knew or recklessly failed to know that the bodily fluid or waste placed on another person was infected with hepatitis, tuberculosis, or human immunodeficiency virus; and
- (2) the person placed the bodily fluid or waste on a public safety official, unless the offense if committed by a person detained or committed under IC 12-26.

(i) The offense described in subsection (c)(1) or (c)(2) is a Level 4 felony if it results in serious bodily injury to an endangered adult (as defined in IC 12-10-3-2).

(j) The offense described in subsection (c)(1) or (c)(2) is a Level 3 felony if it results in serious bodily injury to a person less than fourteen (14) years of age if the offense is committed by a person at least eighteen (18) years of age.

(k) The offense described in subsection (c)(1) or (c)(2) is a Level 2 felony if it results in the death of one (1) or more of the following:

- (1) A person less than fourteen (14) years of age if the offense is committed by a person at least eighteen (18) years of age.
- (2) An endangered adult (as defined in IC 12-10-3-2).

Sexual Assault

The following crimes and definitions under the Indiana Criminal Code most closely represent the crime of "sexual assault."

Rape (IC 35-42-4-1)

Sec. 1. (a) Except as provided in subsection (b), a person who knowingly or intentionally has sexual intercourse with another person or knowingly or intentionally causes another person to perform or submit to other sexual conduct (as defined in IC 35-31.5-2-221.5) when:

- (1) the other person is compelled by force or imminent threat of force;
- (2) the other person is unaware that the sexual intercourse or other sexual conduct (as defined in IC 35-31.5-2-221.5) is occurring; or
- (3) the other person is so mentally disabled or deficient that consent to sexual intercourse or other sexual conduct (as defined in IC 35-31.5-2-221.5) cannot be given; commits rape, a Level 3 felony.



(b) An offense described in subsection (a) is a Level 1 felony if:

- (1) it is committed by using or threatening the use of deadly force;
- (2) it is committed while armed with a deadly weapon;
- (3) it results in serious bodily injury to a person other than a defendant; or
- (4) the commission of the offense is facilitated by furnishing the victim, without the victim's knowledge, with a drug (as defined in IC 16-42-19-2(1)) or a controlled substance (as defined in IC 35-48-1-9) or knowing that the victim was furnished with the drug or controlled substance without the victim's knowledge.

Sexual Battery (IC 35-42-4-8)

Sec. 8. (a) A person who, with intent to arouse or satisfy the person's own sexual desires or the sexual desires of another person:

- (1) touches another person when that person is:
 - (A) compelled to submit to the touching by force or the imminent threat of force; or
 - (B) so mentally disabled or deficient that consent to the touching cannot be given; or
- (2) touches another person's genitals, pubic area, buttocks, or female breast when that person is unaware that the touching is occurring; commits sexual battery, a Level 6 felony.

(b) An offense described in subsection (a) is a Level 4 felony if:

- (1) it is committed by using or threatening the use of deadly force;
- (2) it is committed while armed with a deadly weapon; or
- (3) the commission of the offense is facilitated by furnishing the victim, without the victim's knowledge, with a drug (as defined in IC 16-42-19-2(1)) or a controlled substance (as defined in IC 35-48-1-9) or knowing that the victim was furnished with the drug or controlled substance without the victim's knowledge.

Stalking (IC 35-45-10-1)

"Stalk" means a knowing or an intentional course of conduct involving repeated or continuing harassment of another person that would cause a reasonable person to feel terrorized, frightened, intimidated, or threatened and that actually causes the victim to feel terrorized, frightened, intimidated, or threatened. The term does not include statutorily or constitutionally protected activity.



Prevention and Awareness Programs

Trine offers educational programs to promote awareness and prevention of rape, acquaintance rape, domestic violence, dating violence, sexual assault, and stalking. Education and awareness programs may also include programming, initiatives, strategies, and campaigns intended to end dating violence, domestic violence, sexual assault, and stalking. Primary prevention and awareness programs given to new students and employees include:

For Students:

- **Sexual Assault Awareness Month** — (April). Aims to provide programs that include information about recognizing signs of intimate partner violence and domestic violence issues, addressing the role of consent in sexual relationships, encourages the involvement of men; addresses alcohol and drug issues and the connection between substance use and violence; responding to sexual and intimate partner violence and stalking; and, providing concepts that encourage healthy consensual sexual relationships, that address non-stranger sexual violence, and that dispel traditional beliefs about sexuality and sexual violence.
- **“The Hook-Up”** — Production provided to new students during Orientation week. Provides a definition of active consent, unpacks the importance and necessity of consent, explains the relationship between alcohol and sexual assault, frames rape as a moral issue, encourages the importance of bystander intervention, deconstructs the impact of rape on the victim (and the community), and debunks myths surrounding rape and survivors of violence.
- **Take Back the Night** — Trine University participates in the Take Back the Night program on an annual basis. This is a program designed to make students aware of interpersonal violence as well as how to prevent any violence from happening and resources on campus.
- **“What Were You Wearing”** — (in conjunction with Sexual Assault Prevention Month-April). Display with clothing articles worn by victims of assault. Information, community and campus resources are provided to students.
- **Self-defense Classes (RAD)** — Trine University sponsors local self-defense programs to come to the University and hold sessions for female students who want to learn how to protect themselves during a violent encounter.
- **Alcohol Awareness Week** — Staff provides information to students on safe and responsible behaviors. Information provided to students on the dangers of alcohol abuse and misuse.
- **Alcohol and Drug Abuse Prevention** — Alcohol and Other Drugs is a reality-driven online course designed to educate students on the risks of abusing alcohol and other drugs and to teach successful strategies for handling dangerous situations related to these substances. The course features four modules: Your GPA, Your Brain, Your Peers and Your Life. Each section provides extensive, research-backed evidence of the detrimental effects alcohol and other drugs can have and how social skills and interactions can help reduce the harm associated with these substances.



- **Sexual Violence Prevention for Undergraduate Students** — Sexual Violence Prevention for Undergraduate Students is a reality-driven course designed to educate students about consent, healthy relationships, bystander intervention, as well as the realities of sexual assault, dating violence, domestic violence, and more. Featuring student presenters and survivors, the course includes scenarios, testimonials, and key advice for dealing with these crucial topics. This “Full Course” includes all content from the “Primary” course and additional educational materials, such as testimonials and scenarios to reinforce key concepts.
- **Title IX Rights and Protections** — Title IX requires colleges and universities to promptly investigate a formal complaint and take steps to protect students. This course provides students with information about the importance of Title IX and what an institution’s obligations are when a formal complaint is filed. Topics include a definition of sexual harassment, Title IX regulations and obligations, and grievance procedures.
- **Rape awareness information pamphlet from Ft. Wayne Sexual Assault Treatment Center**

Ongoing prevention and awareness campaigns for all students include:

- Trine University has implemented an online educational program with Vector Solutions that will provide ongoing Title IX training for all students.
- Trine University hosts mandatory Title IX training for all students.
- Trine University implemented a Title IX website page that allows students to quickly access the Title IX policy, Notice of Non-discrimination, Victim Bill of Rights, Scope of Title IX and resources.
- Sexual Violence posters: What is consent and Sexual Assault Prevention Tips posters distributed across campus.

For Faculty/Staff:

Trine University has implemented an online educational program with Vector Solutions that will provide ongoing Title IX training for all employees.

Ongoing prevention and awareness campaigns for all employees include:

- Trine University hosts mandatory Title IX training for all employees.
- Trine University implemented a Title IX website page that allows faculty and staff to quickly access the Title IX policy, Notice of Non-discrimination, Victim Bill of Rights, Scope of Title IX and resources.
- Sexual Violence posters: What is consent and Sexual Assault Prevention Tips posters distributed across campus.

For more information and to view the University’s Title IX Policy, please access the University’s Title IX webpage - <https://www.trine.edu/about/titleix/index.aspx>



Safe and Positive Options for Bystanders Intervention

The Clery Act defines bystander intervention as, “Safe and positive options that may be carried out by an individual or individuals to prevent harm or intervene when there is a risk of dating violence, domestic violence, sexual assault, or stalking. Bystander intervention includes recognizing situations of potential harm, understanding institutional structures and cultural conditions that facilitate violence, overcoming barriers to intervening, identifying safe and effective intervention options, and taking action to intervene.” (34 CFR 668.46(j)(2)(ii))

All members of the Trine community have a responsibility to create a safe, supportive, and inclusive learning environment. Bystander Intervention involves taking action in a situation when another individual needs help. This includes when someone may be at medical risk due to using drugs or alcohol, or vulnerable to sexual or intimate partner violence.

To actively intervene, follow these steps:

1. **Notice the event.** Pay attention to your surroundings.
2. **Interpret the event as a problem.** Recognize that someone is being taken advantage of, vulnerable, or in danger. When in doubt, trust your instincts, and intervene at the earliest possible point.
3. **Take personal responsibility to intervene.** If you don't intervene, it is unlikely that anyone else will.
4. **Decide how you are going to intervene.** Try not to put yourself at risk or make the situation worse.
5. **Decide to intervene.** Take action and intervene at the earliest possible point. If you are not able to fully intervene in a situation, consider responding by asking the victim if he or she needs help or assistance, contacting the police, or seeking out others for assistance.

Types of Intervention:

- **Direct intervention:** Directly addressing the situation in the moment to prevent harm.
- **Delegation:** Seeking help from another individual. This may be someone who is in a role of authority, such as a police officer or campus official.
- **Distraction:** Interrupting the situation without directly confronting the offender by distracting the offender's attention or directing the potential victim away from the situation.
- **MOST IMPORTANTLY:**

“If you see something, say something!”



Additional information and resources about the University's efforts to prevent sexual violence can be found at <http://trine.edu/titleix/>



Risk Reduction

The Clery Act defines risk reduction as, “Options designed to decrease perpetration and bystander inaction, and to increase empowerment for victims in order to promote safety and to help individuals and communities address conditions that facilitate violence.” (34 CFR 668.46(j)(2)(v)) Sexual assault, like all other forms of violence, is **NEVER** the fault of the person assaulted. Below are some general safety tips to consider that may help you avoid or escape situations where someone is trying to harm or take advantage of you sexually or physically:

- **Be aware of your surroundings.**
- **Listen to your intuition.** If you feel like something is wrong, it probably is. Try to get out of the situation.
- **Don't be afraid to make a scene and yell, scream, or run for protection.**
- **Remember, alcohol and drugs can impair your perceptions and reactions.** Be especially careful when you drink, and when you're with someone who has been drinking.
- **Watch your beverage at all times.** Date rape drugs are tasteless, colorless, and odorless. Victims don't know they have ingested these drugs until the effects are well underway.
- **Go with a group of friends** when you go out to a party or to the bars and look out for each other.
- **Speak up or call authorities if you see someone who could be in trouble.**



Healthy, Unhealthy, and Abusive Relationships

A relationship is healthy if each person involved is supported in being the person they want to be. A relationship that limits, manipulates, or damages a person's sense of self is unhealthy and can be harmful or abusive.

Be honest when assessing your relationship on the following factors — you owe it to yourself!

- **Mutual respect** — means valuing your partner for who they are, not who you want them to be or become, and receiving the same from your partner. Does your partner say, do, and believe things that you can support? Or, is one of you trying to change the other?
- **Trust** — is present if you can share your thoughts and feelings with another person **without fear of being hurt physically, cognitively or emotionally. Can you be yourself without fear of criticism or judgment? Can your partner trust you in the same way?**
- **Honesty** — is about being truthful in your words. Do you tell the truth? Do you believe what your partner tells you?
- **Support** — means helping your partner in being their best, and feeling you get the same in return.
- **Fairness/equity** — Do you almost always give? Or give in? Do you expect your partner to do it your way? Healthy relationships involve give and take, compromise and negotiation by all parties.
- **Separate identities** — Relationships are healthy when each person maintains their own unique identity while sharing their true self with their partner. Each continues to grow both in and out of the relationship. If you feel like you are losing yourself or your unique identity, you may be in a harmful relationship.

Here are some rules for healthy sexual relationships:

- It is the responsibility of the person initiating contact to ask for and clearly receive consent before acting.
- If someone is impaired by alcohol or another substance, that person is considered unable to make clear decisions about consent.
- If your partner expresses uncertainty or says no, it is YOUR responsibility to STOP. Healthy sexual relationships are based on continuous communication about consent.



Harmful and abusive behaviors may come in many forms and may include the following:

- **Intimidation** — actions, gestures and looks used to make another fearful.
- **Emotional Abuse** — name calling or humiliation causing the other to feel unworthy.
- **Isolation** — limiting interactions and information in order to establish control.
- **Minimizing/Denying/Blaming** — minimizing the abusive behaviors causing the other to doubt their own feelings or perceptions.
- **Dominance** — treating another as a lesser being and controlling all decisions.
- **Economic Abuse** — limiting another's access to work, food, money or other resources to exert control.
- **Coercion or Threats** — making threats to harm someone in order to control another's behavior.



Procedures a Victim Should Follow If a Crime Occurs

Reporting the Incident

If you are the victim of any violence, including dating violence, domestic violence, sexual assault, or stalking, get help immediately. There are several reporting options available, including reporting to campus and local law enforcement, going through an institutional disciplinary process, and/or filing a Title IX complaint. Campus reporting options are listed below:

- Reporting directly to campus authorities or local law enforcement
- Reporting directly to the Title IX Coordinator
- Reporting directly to the Deputy Title IX Coordinator

The complainant may make a verbal or written statement to the Title IX Coordinator or a Deputy Coordinator, detailing the alleged violation.

Retaliation against anyone who makes a report of sexual misconduct is prohibited by University policy. Retaliation is defined as “Intimidation, threats, harassment, adverse changes in work or academic environments — or other adverse actions threatened or taken against a reporting party or a third party — in an attempt to retaliate against, prevent, or otherwise obstruct the reporting of sexual misconduct.”

There are numerous reasons to report to Campus Safety, including:

- Assisting the victim and helping them access necessary resources.
- Taking actions to prevent further victimization, including issuing a crime alert to warn the campus community of an impending threat to safety.
- Apprehending the assailant.
- Collecting and preserving evidence necessary for prosecution.
- Seeking justice for the wrong that has been done to the victim.
- Recording the incident is essential for compiling statistics for on campus occurrences.
- If a crime did not occur on University property, Campus Safety can still assist in contacting the appropriate law enforcement agency.





Institutional Options

The University's institutional disciplinary procedures consist of a prompt, fair and impartial process from the initial investigation to the final result. Investigators receive annual training on issues related to domestic violence, dating violence, sexual assault, and stalking. They are instructed on how to conduct investigations and hearings in a manner that protects the safety of both the complainant and the respondent, while promoting fairness and accountability. The process ensures:

- The complainant and the respondent each have the right to be advised by an advisor of their choice, at their own expense, at any stage of the process, and to have that advisor accompany them to any meeting or hearing. Advisors may be present but are limited to an advisory role.
- The decision of the Title IX coordinator will be based solely on the information presented during the investigation and will be based upon a preponderance of the evidence standard.
- The complainant and the respondent will be notified simultaneously in writing of the outcome and results of any disciplinary proceedings, as well as any changes to the results before they are final.
- The complainant and the respondent will be notified simultaneously in writing of the university's procedures for the accused or the victim to appeal the results.

Filing a Title IX Complaint

Under Title IX of the Education Amendments of 1972, sexual violence is considered a form of sexual discrimination. You may file a Title IX sex discrimination complaint using one of the resources listed within the institutional reporting options above.

Importance of Preserving Evidence

It is particularly important to remember that it may be necessary to preserve evidence for use in court or in University disciplinary proceedings. Evidence may also be important in obtaining a protection order.

DO NOT do any of the following things until you've received medical attention and/or contacted the police:

- **Bathe or shower**
- **Use the bathroom**
- **Change clothes**
- **Comb hair**
- **Clean up crime scene**
- **Move anything that may have been touched**
- **Collect evidence yourself.** Get help from medical or law enforcement personnel as soon as possible—or at least within 96 hours of the assault. Additionally, keep and document incidents and communications that may indicate a pattern of stalking behavior.

RESPONSE STEPS:

- 1. Dial 9-1-1** for Emergencies.
- 2. Get to safe place** as soon as possible.
- 3. Preserve physical evidence.**

Institutional Reporting Options include:

Title IX coordinator:
Jamie Norton
260.665.4847

Deputy Title IX coordinator:
Francisco Ortiz
260.665.4206

Deputy Title IX coordinator:
Jacqueline DeLagrange
260.665.4187

Deputy Title IX coordinator:
Stephanie George
260.665.4991

Deputy Title IX coordinator:
Mike Black
260.665.4171

Deputy Title IX coordinator:
Evan Gustin
260.665.4374

Medical and Counseling Services

You should seek medical attention at the nearest hospital – even if you're not sure if you want to report the incident. It's the best way to protect yourself from the risk of sexually transmitted diseases and pregnancy. And even if you think you're physically okay, you may have injuries that need treatment. It's also important to have a forensic exam done. This ensures that evidence gets collected in case you decide to report what happened to the police or campus authorities.

Coping with the aftermath of sexual violence can be very difficult – but remember, you're not alone. Trine University offers counseling services to help you recover. There are also resources available in your community. Make it a priority to get the help you need to process what happened to you and recover from the incident.

A list of counseling resources can be found below:

Trine University Student Counseling Services:

To schedule an appointment with Counselor during normal business hours (8 a.m. – 4:30 p.m., M-F): 800.721.8809

After hours – Emergency/Crisis (to speak with counselor on call) 260.446.1867

Non-emergency appointments can also be made by calling Counseling Services **260.665.4172** or emailing:

Megan Cook, cookm@trine.edu

Shelly Edwards, edwardss@trine.edu

General email inbox, counseling@trine.edu

Fort Wayne Women's Bureau 24/7 Rape Crisis Hotline: 888.311.RAPE (7273), 24 Hour Crisis Intervention

Other Resources / Advocate Services

Other advocate services and resources available to victims of dating violence, domestic violence, sexual assault and stalking include:

Student Retention Office – Helps address the academic concerns of students and assists with other University related concerns.

Call **260.665.4947** or email: taylorj@trine.edu



Victims are able to seek medical attention at the following locations:

- +** Cameron Hospital
416 E Maumee Street,
Angola, IN
911 or 260.665.2141
- +** Fort Wayne Sexual
Assault Treatment Center
2270 Lake Ave, Suite 201
Fort Wayne, IN
260.423.2222

Additional information and resources for medical attention for Trine University remote campus can be found at <https://www.trine.edu/about/titleix/resources.aspx>.



Involvement of Law Enforcement

The University will provide information to anyone reporting an incident concerning options to involve law enforcement. This includes the option to:

- Notify proper law enforcement authorities, including on-campus authorities and local police.
- Be assisted by campus authorities in notifying law enforcement authorities.
- Decline to notify such authorities.

If you choose to report the incident to Angola Police Department or Campus Safety, an officer will take a statement from you regarding what happened. The officer will ask you to describe the assailant(s) and may ask questions about the scene of the crime, any witnesses, and what happened before and after the incident. If you wish, you may have a support person with you during the interview. **IMPORTANT:** Reporting an incident to the police is a separate step from choosing to prosecute. When you file a report, you are **NOT** obligated to continue with legal proceedings or University disciplinary action. **YOU** can **CHOOSE** whether or not to participate in proceedings at any point.

Protection Orders

Trine University will recognize all valid orders of protection, no contact orders, restraining orders, or similar lawful orders. If you have a valid order, please inform Campus Safety to place the order on file. If you need to file a Petition for an Order of Protection, you can do so at Steuben County Community Anti-Violence Alliance. To learn more about protection orders or to get assistance with filing, contact the Indiana Coalition Against Domestic Violence (ICADV) hotline at 800.332.7385.

Community Anti-Violence Alliance
200 Hoosier Drive
Angola, IN 46703
260.624.3600

Student victims may also request changes in University classroom, academic, and/or living arrangements; these requests will be granted when such changes are reasonably available.

The University may also impose a No Contact Order during and following disciplinary proceedings for sexual violence.

Written Notification to Students and Employee Victims

If a student or employee reports to be a victim of dating violence, domestic violence, sexual assault or stalking, whether the offense occurred on or off campus, to one of the University reporting units listed in the “Consider Reporting the Incident”, they will be provided written information about their rights, options and any available resources.

Trine University’s Rights for Victims of Sexual Assault, Domestic Violence, Dating Violence and Stalking can be found at <https://www.trine.edu/about/titleix/documents/victimsbillofrights2021.pdf>.





Support, Remedial, and Protective Measures

The University may offer supportive measures to students and employees such as:

- No contact directives
- Referrals to campus and community resources for victim advocacy, counseling, health services, legal assistance, immigration assistance, disability services;
- Academic support including extensions of time and other course-related adjustments;
- Modification of work or class schedules;
- Change in work or housing locations;
- Consideration in reporting relationship;
- Consideration of leave requests; and
- Assistance with academic petitions.

Sanctions

The University may impose sanctions on the respondent (perpetrator) following a final determination of responsibility during University disciplinary procedures. For students, these sanctions can include formal warnings, disciplinary probation, suspension, and up to permanent expulsion. For employees, sanctions may include corrective action, up to and including termination of employment. Dating violence, domestic violence, sexual assault and stalking may be found to be criminal acts, which may also subject the perpetrator to criminal or civil penalties under federal and state laws.

Protective Measures

Students and employees who report being a victim of sexual violence, including dating violence, domestic violence, sexual assault or stalking, may have options for changing academic, living, transportation, and working situations. If reasonably available, the University will make requested accommodations, regardless of whether the victim chooses to report the crime to Campus Safety or local law enforcement. The University will maintain as confidential any accommodations or protective measures provided, to the extent maintaining such confidentiality would not impair the ability of the institution to provide accommodations or protective measures.

Institutional Disciplinary Procedures



Confidentiality and Privacy

The University will work with you to protect your privacy by sharing information with only those who need to know. As such, in all cases, the University will share the parties' information and details of the allegation only with University officials, law enforcement personnel, and other individuals who have a legitimate administrative or legal reason to be informed.

Only those University employees who are licensed, professional counselors (e.g. mental health counselors) or pastoral counselors working in that capacity are able to maintain your complete confidentiality and are not required to convey any information regarding your situation without your consent. Most other University employees are required to report names and details of any incident of sexual violence that has been brought to their attention to the Title IX Coordinator or designated Deputy Coordinators on their campus for further investigation. Certain specifically identified non-professional student advocates and health center staff do not have to share identifying information unless you provide your consent. However, they are obligated to provide non-identifying information regarding the nature, date, time, and general location of the incident for purposes of compiling aggregate annual crime statistics and assessing the need to alert the University community of potential dangers. You should discuss your desires regarding the sharing of information with any University employee with whom you speak, to ensure you understand their reporting obligations and what information they may be required to share.

Please note that under Indiana law (IC 31-33-5-2), any person who has a reason to believe a person under the age of 18 is a victim of abuse or neglect, including relationship violence or assault, must make a report to either local law enforcement OR to the Indiana Department of Child Services. After making the report, the individual shall notify the University Title IX Coordinator that the report was made.



Definitions of Crimes and Geography



Murder/Non-negligent Manslaughter — the willful (non-negligent) killing of one human being by another.

Manslaughter by Negligence — the killing of another person through gross negligence.

Rape — the penetration, no matter how slight, of the vagina or anus with any body part or object, or oral penetration by a sex organ of another person, without the consent of the victim.

Fondling — the touching of the private body parts of another person for the purpose of sexual gratification, without the consent of the victim, including instances where the victim is incapable of giving consent because of their age or because their temporary or permanent mental incapacity.

Incest — sexual intercourse between persons who are related to each other within the degrees wherein marriage is prohibited by law.

Statutory Rape — sexual intercourse with a person who is under the statutory age of consent.

Domestic Violence — a felony or misdemeanor crime of violence committed:

- By a current or former spouse or intimate partner of the victim
- By a person with whom the victim shares a child in common
- By a person who is cohabitating with, or has cohabitated with the victim as a spouse or intimate partner
- By a person similarly situated to a spouse of the victim under the domestic or family violence laws of jurisdiction in which the crime of violence occurred.
- By any other person against an adult or youth victim who is protected from that person's acts under the domestic violence laws of the jurisdiction in which the crime of violence occurred.

Dating Violence — violence committed by a person who is or has been in a social relationship of a romantic or intimate nature with the victim. The existence of such a relationship shall be determined based on the reporting party's statement and with consideration of the length of the relationship, the type of relationship, and the frequency of interaction between the persons involved in the relationship. For the purposes of this definition:

- Dating violence includes, but is not limited to, sexual or physical abuse or the threat of such abuse.
- Dating violence does not include acts covered under the definition of domestic violence.





Stalking — engaging in a course of conduct directed at a specific person that would cause a reasonable person to fear for the person’s safety or the safety of others; or suffer substantial emotional distress. For the purpose of this definition:

- Course of conduct means two or more acts, including, but not limited to, acts in which the stalker directly, indirectly, or through third parties, by any action, method, device, or means, follows, monitors, observes, surveils, threatens, or communicates to or about a person or interferes with a person’s property.
- Reasonable person means a reasonable person under similar circumstances and with similar identities to the victim.
- Substantial emotional distress means significant mental suffering or anguish that may, but does not necessarily require medical or other professional treatment or counseling.

Aggravated Assault — An unlawful attack by one person upon another for the purpose of inflicting severe or aggravated bodily injury. This type of assault usually is accompanied by the use of a weapon or by means likely to produce death or great bodily harm.

Arson — Any willful or malicious burning or attempt to burn, with or without intent to defraud, a dwelling house, public building, motor vehicle or aircraft, personal property of another, etc.

Burglary — The unlawful entry of a structure to commit a felony or a theft.

Robbery — The taking or attempted taking of anything of value from the care, custody, or control of a person or persons by force, threat of force, or violence and/or by putting the victim in fear.

Motor Vehicle Theft — The theft or attempted theft of a motor vehicle.

Hate Crime — a criminal offense that manifests evidence that the victim was intentionally selected because of the perpetrator’s bias against the victim. For the purposes of this section, the categories of bias include the victim’s actual or perceived race, religion, gender, gender identity, sexual orientation, ethnicity, national origin, and disability. Hate Crimes reported include all of the crimes listed here, plus destruction/damage/ vandalism of property, intimidation, larceny/theft, and simple assault which are motivated by bias.

- **Simple Assault** — an unlawful physical attack by one person upon another where neither the offender displays a weapon, nor the victim suffers obvious severe or aggravated bodily injury involving apparent broken bones, loss of teeth, possible internal injury, severe laceration, or loss of consciousness.
- **Larceny - Theft** — the unlawful taking, carrying, leading, or riding away of property from the possession or constructive possession of another. Constructive possession is the condition in which a person does not have physical custody or possession, but is in a position to exercise dominion or control over a thing.
- **Intimidation** — to unlawfully place another person in reasonable fear of bodily harm through the use of threatening words and/or other conduct, but without displaying a weapon or subjecting the victim to actual physical attack.
- **Destruction/Damage/Vandalism of Property** — to willfully or maliciously destroy, damage, deface, or otherwise injure real or personal property without the consent of the owner or the person having custody or control of it.



Arrest – persons processed by arrest, citation or summons.

Referral for Disciplinary Action: the referral of any person to any official who initiates a disciplinary action of which a record is established and which may result in the imposition of a sanction.

- **Liquor Laws** — The violation of state or local laws or ordinances prohibiting the manufacture, sale, purchase, transportation, possession, or use of alcoholic beverages, not including driving under the influence and drunkenness.
- **Drug Abuse Violations** — The violation of laws prohibiting the production, distribution, and/or use of certain controlled substances and the equipment or devices utilized in their preparation and/or use. The unlawful cultivation, manufacture, distribution, sale, purchase, use, possession, transportation, or importation of any controlled drug or narcotic substance. Arrests for violations of state and local laws, specifically those relating to the unlawful possession, sale, use, growing, manufacturing, and making of narcotic drugs.
- **Weapons: Carrying, Possessing, Etc.** — The violation of laws or ordinances prohibiting the manufacture, sale, purchase, transportation, possession, concealment, or use of firearms, cutting instruments, explosives, incendiary devices, or other deadly weapons.

Geography

On-Campus — Any building or property owned or controlled by an institution within the same reasonably contiguous geographic area and used by the institution in direct support of or in a manner related to, the institution's educational purposes, including residence halls; and any building or property that is owned by the institution but controlled by another person, is frequently used by students, and supports institutional purposes.

Residential Facilities — Any student housing facility that is owned or controlled by the institution, or is located on property that is owned or controlled by the institution, and is within a reasonably contiguous geographic area that makes up the campus.

* Some Trine University Education Centers do not operate residential facilities; these campuses will indicate an "n/a" within the column for crimes committed in a residential facility.

On-Campus Total — This category is a total of all the on-campus statistics, combining the statistics from residential facilities located on-campus, and all other on-campus property.

Non-Campus — Any building or property owned or controlled by a student organization that is officially recognized by the institution; or any building or property owned or controlled by an institution that is used in direct support of, or in relation to, the institution's educational purposes, is frequently used by students, and is not within the same reasonably contiguous geographic area of the institution.

Public Property — All public property, including thoroughfares, streets, sidewalks, and parking facilities, that is within the campus, or immediately adjacent to and accessible from the campus.



Preparation of Disclosure of Crime Statistics



Disclosure of Annual Crime Statistics

Trine University prepares a disclosure of crime statistics and publishes it as part of this Annual Security Report by October 1 each year, adding new statistics for the previous year. Three years' worth of statistics are included for certain types of crimes, as defined in the Clery Act that were reported to have occurred: on campus; in certain non-campus buildings or property owned or controlled by the University; or on public property on or immediately adjacent to the campus. Reported crimes that occur in Trine University owned or controlled housing that are occupied by students, or in Trine University owned or controlled student apartments, are reported as occurring in on-campus residential units, a subset of the reported crimes already included in the on-campus category.

Reports of crimes and attempted crimes are listed according to the calendar year in which the crime was reported, as required by the Clery Act, as are arrests and referrals for illegal alcohol, drug, and weapons violations.

Statistics are based on Trine University's Campus Safety records and those gathered annually by written request from cooperating law enforcement agencies and campus security authorities, including, but not limited to:

- **Angola Police Department**
- **Steuben County Sheriff's Office**
- **Indiana State Police**
- **Title IX Coordinator**
- **Vice President for Student Affairs/Dean of Students**

Although the following sources are not required by law to provide statistics for this report, statistical information, which contains no personal identifying information, is also requested from: Student Counseling Center.

Each year, enrolled students, faculty, and staff are notified via email when the new Annual Security Report is available, which is generally on or before October 1. Prospective students and prospective employees are notified of the report during application processes.

Statistics are reported using the Uniform Crime Reporting (UCR) and other definitions determined in the Clery Act.





Crime Statistics

Angola Main Campus

January 1, 2023 - December 31, 2023

	Criminal Offenses											
	Residence Halls			Total On-Campus			Non-Campus Buildings			Public Property		
	2021	2022	2023	2021	2022	2023	2021	2022	2023	2021	2022	2023
Murder/Non-negligent Manslaughter	0	0	0	0	0	0	0	0	0	0	0	0
Negligent Manslaughter	0	0	0	0	0	0	0	0	0	0	0	0
Fondling	1	1	2	1	1	2	0	0	0	0	0	0
Incest	0	0	0	0	0	0	0	0	0	0	0	0
Rape	2	0	2	2	0	2	0	0	0	0	0	0
Domestic Violence	3	0	0	3	0	2	0	0	0	0	0	0
Dating Violence	0	1	0	0	1	1	0	0	0	0	0	0
Stalking	0	0	0	0	0	1	0	0	0	0	0	0
Robbery	0	0	0	0	0	0	0	0	0	0	0	0
Aggravated Assault	0	0	1	1	0	1	0	0	0	6	0	0
Buglary	0	0	0	0	0	2	0	0	0	0	0	0
Motor Vehicle Theft	0	0	0	0	0	0	0	0	0	0	0	0
Arson	0	0	0	0	0	0	0	0	0	0	0	0
Simple Assault	0	0	0	0	0	0	0	0	0	0	0	0
Intimidation	0	0	1	0	0	1	0	0	0	0	0	0
Theft	0	0	2	0	0	2	0	0	0	0	0	0
Property Damage	0	0	18	0	0	18	0	0	0	0	0	0

	Criminal Hate Offenses											
	Residence Halls			Total On-Campus			Non-Campus Buildings			Public Property		
	2021	2022	2023	2021	2022	2023	2021	2022	2023	2021	2022	2023
Murder/Non-negligent Manslaughter	0	0	0	0	0	0	0	0	0	0	0	0
Negligent Manslaughter	0	0	0	0	0	0	0	0	0	0	0	0
Fondling	0	0	0	0	0	0	0	0	0	0	0	0
Incest	0	0	0	0	0	0	0	0	0	0	0	0
Rape	0	0	0	0	0	0	0	0	0	0	0	0
Domestic Violence	0	0	0	0	0	0	0	0	0	0	0	0
Dating Violence	0	0	0	0	0	0	0	0	0	0	0	0
Stalking	0	0	0	0	0	0	0	0	0	0	0	0
Robbery	0	0	0	0	0	0	0	0	0	0	0	0
Aggravated Assault	0	0	0	0	0	0	0	0	0	0	0	0
Buglary	0	0	0	0	0	0	0	0	0	0	0	0
Motor Vehicle Theft	0	0	0	0	0	0	0	0	0	0	0	0
Arson	0	0	0	0	0	0	0	0	0	0	0	0
Simple Assault	0	0	0	0	0	0	0	0	0	0	0	0
Intimidation	0	0	0	0	0	0	0	0	0	0	0	0
Theft	0	0	0	0	0	0	0	0	0	0	0	0
Property Damage	0	0	0	0	0	0	0	0	0	0	0	0

	Arrests											
	Residence Halls			Total On-Campus			Non-Campus Buildings			Public Property		
	2021	2022	2023	2021	2022	2023	2021	2022	2023	2021	2022	2023
Liquor Law Violations	0	11	0	0	11	0	0	0	0	0	0	0
Drug Abuse Violations	1	5	0	1	5	0	0	0	0	0	0	0
Weapons Violations	0	0	0	0	0	0	0	0	0	0	0	0

	Disciplinary Actions/ Judicial referrals		
	2021	2022	2023
Liquor Law Violations	23	11	20
Drug Abuse Violations	7	5	8
Weapons Violations	0	0	0

Crime Statistics

Fort Wayne Campus: Carew Street
January 1, 2023 - December 31, 2023



	Criminal Offenses											
	Residence Halls			Total On-Campus			Non-Campus Buildings			Public Property		
	2021	2022	2023	2021	2022	2023	2021	2022	2023	2021	2022	2023
Murder/Non-negligent Manslaughter	n/a	n/a	n/a	0	0	0	0	0	0	0	0	0
Negligent Manslaughter	n/a	n/a	n/a	0	0	0	0	0	0	0	0	0
Fondling	n/a	n/a	n/a	0	0	0	0	0	0	0	0	0
Incest	n/a	n/a	n/a	0	0	0	0	0	0	0	0	0
Rape	n/a	n/a	n/a	0	0	0	0	0	0	0	0	0
Domestic Violence	n/a	n/a	n/a	0	0	0	0	0	0	0	0	0
Dating Violence	n/a	n/a	n/a	0	0	0	0	0	0	0	0	0
Stalking	n/a	n/a	n/a	0	0	0	0	0	0	0	0	0
Robbery	n/a	n/a	n/a	0	0	0	0	0	0	0	0	0
Aggravated Assault	n/a	n/a	n/a	0	0	0	0	0	0	0	0	0
Buglary	n/a	n/a	n/a	0	0	0	0	0	0	0	0	0
Motor Vehicle Theft	n/a	n/a	n/a	0	0	0	0	0	0	1	0	0
Arson	n/a	n/a	n/a	0	0	0	0	0	0	0	0	0
Simple Assault	n/a	n/a	n/a	0	0	0	0	0	0	0	0	0
Intimidation	n/a	n/a	n/a	0	0	0	0	0	0	0	0	0
Theft	n/a	n/a	n/a	0	0	0	0	0	0	0	0	0
Property Damage	n/a	n/a	n/a	0	0	0	0	0	0	0	0	0

	Criminal Hate Offenses											
	Residence Halls			Total On-Campus			Non-Campus Buildings			Public Property		
	2021	2022	2023	2021	2022	2023	2021	2022	2023	2021	2022	2023
Murder/Non-negligent Manslaughter	n/a	n/a	n/a	0	0	0	0	0	0	0	0	0
Negligent Manslaughter	n/a	n/a	n/a	0	0	0	0	0	0	0	0	0
Fondling	n/a	n/a	n/a	0	0	0	0	0	0	0	0	0
Incest	n/a	n/a	n/a	0	0	0	0	0	0	0	0	0
Rape	n/a	n/a	n/a	0	0	0	0	0	0	0	0	0
Domestic Violence	n/a	n/a	n/a	0	0	0	0	0	0	0	0	0
Dating Violence	n/a	n/a	n/a	0	0	0	0	0	0	0	0	0
Stalking	n/a	n/a	n/a	0	0	0	0	0	0	0	0	0
Robbery	n/a	n/a	n/a	0	0	0	0	0	0	0	0	0
Aggravated Assault	n/a	n/a	n/a	0	0	0	0	0	0	0	0	0
Buglary	n/a	n/a	n/a	0	0	0	0	0	0	0	0	0
Motor Vehicle Theft	n/a	n/a	n/a	0	0	0	0	0	0	0	0	0
Arson	n/a	n/a	n/a	0	0	0	0	0	0	0	0	0
Simple Assault	n/a	n/a	n/a	0	0	0	0	0	0	0	0	0
Intimidation	n/a	n/a	n/a	0	0	0	0	0	0	0	0	0
Theft	n/a	n/a	n/a	0	0	0	0	0	0	0	0	0
Property Damage	n/a	n/a	n/a	0	0	0	0	0	0	0	0	0

	Arrests											
	Residence Halls			Total On-Campus			Non-Campus Buildings			Public Property		
	2021	2022	2023	2021	2022	2023	2021	2022	2023	2021	2022	2023
Liquor Law Violations	n/a	n/a	n/a	0	0	0	0	0	0	0	0	0
Drug Abuse Violations	n/a	n/a	n/a	0	0	0	0	0	0	0	0	0
Weapons Violations	n/a	n/a	n/a	0	0	0	0	0	0	0	0	0

	Disciplinary Actions/ Judicial referrals		
	2021	2022	2023
Liquor Law Violations	0	0	0
Drug Abuse Violations	0	0	0
Weapons Violations	0	0	0

Crime Statistics

Allen Park, Michigan

January 1, 2023 - December 31, 2023



	Criminal Offenses											
	Residence Halls			Total On-Campus			Non-Campus Buildings			Public Property		
	2021	2022	2023	2021	2022	2023	2021	2022	2023	2021	2022	2023
Murder/Non-negligent Manslaughter	n/a	n/a	n/a	0	0	0	0	0	0	0	0	0
Negligent Manslaughter	n/a	n/a	n/a	0	0	0	0	0	0	0	0	0
Fondling	n/a	n/a	n/a	0	0	0	0	0	0	0	0	0
Incest	n/a	n/a	n/a	0	0	0	0	0	0	0	0	0
Rape	n/a	n/a	n/a	0	0	0	0	0	0	0	0	0
Domestic Violence	n/a	n/a	n/a	0	0	0	0	0	0	0	0	0
Dating Violence	n/a	n/a	n/a	0	0	0	0	0	0	0	0	0
Stalking	n/a	n/a	n/a	0	0	0	0	0	0	0	0	0
Robbery	n/a	n/a	n/a	0	0	0	0	0	0	0	0	0
Aggravated Assault	n/a	n/a	n/a	0	0	0	0	0	0	0	0	0
Buglary	n/a	n/a	n/a	0	0	0	0	0	0	0	0	0
Motor Vehicle Theft	n/a	n/a	n/a	0	0	0	0	0	0	0	0	0
Arson	n/a	n/a	n/a	0	0	0	0	0	0	0	0	0
Simple Assault	n/a	n/a	n/a	0	0	0	0	0	0	0	0	0
Intimidation	n/a	n/a	n/a	0	0	0	0	0	0	0	0	0
Theft	n/a	n/a	n/a	0	0	0	0	0	0	0	0	0
Property Damage	n/a	n/a	n/a	0	0	0	0	0	0	0	0	0

	Criminal Hate Offenses											
	Residence Halls			Total On-Campus			Non-Campus Buildings			Public Property		
	2021	2022	2023	2021	2022	2023	2021	2022	2023	2021	2022	2023
Murder/Non-negligent Manslaughter	n/a	n/a	n/a	0	0	0	0	0	0	0	0	0
Negligent Manslaughter	n/a	n/a	n/a	0	0	0	0	0	0	0	0	0
Fondling	n/a	n/a	n/a	0	0	0	0	0	0	0	0	0
Incest	n/a	n/a	n/a	0	0	0	0	0	0	0	0	0
Rape	n/a	n/a	n/a	0	0	0	0	0	0	0	0	0
Domestic Violence	n/a	n/a	n/a	0	0	0	0	0	0	0	0	0
Dating Violence	n/a	n/a	n/a	0	0	0	0	0	0	0	0	0
Stalking	n/a	n/a	n/a	0	0	0	0	0	0	0	0	0
Robbery	n/a	n/a	n/a	0	0	0	0	0	0	0	0	0
Aggravated Assault	n/a	n/a	n/a	0	0	0	0	0	0	0	0	0
Buglary	n/a	n/a	n/a	0	0	0	0	0	0	0	0	0
Motor Vehicle Theft	n/a	n/a	n/a	0	0	0	0	0	0	0	0	0
Arson	n/a	n/a	n/a	0	0	0	0	0	0	0	0	0
Simple Assault	n/a	n/a	n/a	0	0	0	0	0	0	0	0	0
Intimidation	n/a	n/a	n/a	0	0	0	0	0	0	0	0	0
Theft	n/a	n/a	n/a	0	0	0	0	0	0	0	0	0
Property Damage	n/a	n/a	n/a	0	0	0	0	0	0	0	0	0

	Arrests											
	Residence Halls			Total On-Campus			Non-Campus Buildings			Public Property		
	2021	2022	2023	2021	2022	2023	2021	2022	2023	2021	2022	2023
Liquor Law Violations	n/a	n/a	n/a	0	0	0	0	0	0	0	0	0
Drug Abuse Violations	n/a	n/a	n/a	0	0	0	0	0	0	0	0	0
Weapons Violations	n/a	n/a	n/a	0	0	0	0	0	0	0	0	0

	Disciplinary Actions/ Judicial referrals		
	2021	2022	2023
Liquor Law Violations	0	0	0
Drug Abuse Violations	0	0	0
Weapons Violations	0	0	0

Crime Statistics

Phoenix, Arizona

January 1, 2023 - December 31, 2023



	Criminal Offenses											
	Residence Halls			Total On-Campus			Non-Campus Buildings			Public Property		
	2021	2022	2023	2021	2022	2023	2021	2022	2023	2021	2022	2023
Murder/Non-negligent Manslaughter	n/a	n/a	n/a	0	0	0	0	0	0	0	0	0
Negligent Manslaughter	n/a	n/a	n/a	0	0	0	0	0	0	0	0	0
Fondling	n/a	n/a	n/a	0	0	0	0	0	0	0	0	0
Incest	n/a	n/a	n/a	0	0	0	0	0	0	0	0	0
Rape	n/a	n/a	n/a	0	0	0	0	0	0	0	0	0
Domestic Violence	n/a	n/a	n/a	0	0	0	0	0	0	0	0	0
Dating Violence	n/a	n/a	n/a	0	0	0	0	0	0	0	0	0
Stalking	n/a	n/a	n/a	0	0	0	0	0	0	0	0	0
Robbery	n/a	n/a	n/a	0	0	0	0	0	0	0	0	0
Aggravated Assault	n/a	n/a	n/a	0	0	0	0	0	0	0	0	0
Buglary	n/a	n/a	n/a	0	0	0	0	0	0	0	0	0
Motor Vehicle Theft	n/a	n/a	n/a	0	0	0	0	0	0	0	0	0
Arson	n/a	n/a	n/a	0	0	0	0	0	0	0	0	0
Simple Assault	n/a	n/a	n/a	0	0	0	0	0	0	0	0	0
Intimidation	n/a	n/a	n/a	0	0	0	0	0	0	0	0	0
Theft	n/a	n/a	n/a	0	0	0	0	0	0	0	0	0
Property Damage	n/a	n/a	n/a	0	0	0	0	0	0	0	0	0

	Criminal Hate Offenses											
	Residence Halls			Total On-Campus			Non-Campus Buildings			Public Property		
	2021	2022	2023	2021	2022	2023	2021	2022	2023	2021	2022	2023
Murder/Non-negligent Manslaughter	n/a	n/a	n/a	0	0	0	0	0	0	0	0	0
Negligent Manslaughter	n/a	n/a	n/a	0	0	0	0	0	0	0	0	0
Fondling	n/a	n/a	n/a	0	0	0	0	0	0	0	0	0
Incest	n/a	n/a	n/a	0	0	0	0	0	0	0	0	0
Rape	n/a	n/a	n/a	0	0	0	0	0	0	0	0	0
Domestic Violence	n/a	n/a	n/a	0	0	0	0	0	0	0	0	0
Dating Violence	n/a	n/a	n/a	0	0	0	0	0	0	0	0	0
Stalking	n/a	n/a	n/a	0	0	0	0	0	0	0	0	0
Robbery	n/a	n/a	n/a	0	0	0	0	0	0	0	0	0
Aggravated Assault	n/a	n/a	n/a	0	0	0	0	0	0	0	0	0
Buglary	n/a	n/a	n/a	0	0	0	0	0	0	0	0	0
Motor Vehicle Theft	n/a	n/a	n/a	0	0	0	0	0	0	0	0	0
Arson	n/a	n/a	n/a	0	0	0	0	0	0	0	0	0
Simple Assault	n/a	n/a	n/a	0	0	0	0	0	0	0	0	0
Intimidation	n/a	n/a	n/a	0	0	0	0	0	0	0	0	0
Theft	n/a	n/a	n/a	0	0	0	0	0	0	0	0	0
Property Damage	n/a	n/a	n/a	0	0	0	0	0	0	0	0	0

	Arrests											
	Residence Halls			Total On-Campus			Non-Campus Buildings			Public Property		
	2021	2022	2023	2021	2022	2023	2021	2022	2023	2021	2022	2023
Liquor Law Violations	n/a	n/a	n/a	0	0	0	0	0	0	0	0	0
Drug Abuse Violations	n/a	n/a	n/a	0	0	0	0	0	0	0	0	0
Weapons Violations	n/a	n/a	n/a	0	0	0	0	0	0	0	0	0

	Disciplinary Actions/ Judicial referrals		
	2021	2022	2023
Liquor Law Violations	0	0	0
Drug Abuse Violations	0	0	0
Weapons Violations	0	0	0

Crime Statistics

Reston, Virginia
January 1, 2023 - December 31, 2023



	Criminal Offenses											
	Residence Halls			Total On-Campus			Non-Campus Buildings			Public Property		
	2021	2022	2023	2021	2022	2023	2021	2022	2023	2021	2022	2023
Murder/Non-negligent Manslaughter	n/a	n/a	n/a	n/a	n/a	0	n/a	n/a	0	n/a	n/a	0
Negligent Manslaughter	n/a	n/a	n/a	n/a	n/a	0	n/a	n/a	0	n/a	n/a	0
Fondling	n/a	n/a	n/a	n/a	n/a	0	n/a	n/a	0	n/a	n/a	0
Incest	n/a	n/a	n/a	n/a	n/a	0	n/a	n/a	0	n/a	n/a	0
Rape	n/a	n/a	n/a	n/a	n/a	0	n/a	n/a	0	n/a	n/a	0
Domestic Violence	n/a	n/a	n/a	n/a	n/a	0	n/a	n/a	0	n/a	n/a	0
Dating Violence	n/a	n/a	n/a	n/a	n/a	0	n/a	n/a	0	n/a	n/a	0
Stalking	n/a	n/a	n/a	n/a	n/a	0	n/a	n/a	0	n/a	n/a	0
Robbery	n/a	n/a	n/a	n/a	n/a	0	n/a	n/a	0	n/a	n/a	0
Aggravated Assault	n/a	n/a	n/a	n/a	n/a	0	n/a	n/a	0	n/a	n/a	0
Buglary	n/a	n/a	n/a	n/a	n/a	0	n/a	n/a	0	n/a	n/a	0
Motor Vehicle Theft	n/a	n/a	n/a	n/a	n/a	0	n/a	n/a	0	n/a	n/a	0
Arson	n/a	n/a	n/a	n/a	n/a	0	n/a	n/a	0	n/a	n/a	0
Simple Assault	n/a	n/a	n/a	n/a	n/a	0	n/a	n/a	0	n/a	n/a	0
Intimidation	n/a	n/a	n/a	n/a	n/a	0	n/a	n/a	0	n/a	n/a	0
Theft	n/a	n/a	n/a	n/a	n/a	0	n/a	n/a	0	n/a	n/a	0
Property Damage	n/a	n/a	n/a	n/a	n/a	0	n/a	n/a	0	n/a	n/a	0

	Criminal Hate Offenses											
	Residence Halls			Total On-Campus			Non-Campus Buildings			Public Property		
	2021	2022	2023	2021	2022	2023	2021	2022	2023	2021	2022	2023
Murder/Non-negligent Manslaughter	n/a	n/a	n/a	n/a	n/a	0	n/a	n/a	0	n/a	n/a	0
Negligent Manslaughter	n/a	n/a	n/a	n/a	n/a	0	n/a	n/a	0	n/a	n/a	0
Fondling	n/a	n/a	n/a	n/a	n/a	0	n/a	n/a	0	n/a	n/a	0
Incest	n/a	n/a	n/a	n/a	n/a	0	n/a	n/a	0	n/a	n/a	0
Rape	n/a	n/a	n/a	n/a	n/a	0	n/a	n/a	0	n/a	n/a	0
Domestic Violence	n/a	n/a	n/a	n/a	n/a	0	n/a	n/a	0	n/a	n/a	0
Dating Violence	n/a	n/a	n/a	n/a	n/a	0	n/a	n/a	0	n/a	n/a	0
Stalking	n/a	n/a	n/a	n/a	n/a	0	n/a	n/a	0	n/a	n/a	0
Robbery	n/a	n/a	n/a	n/a	n/a	0	n/a	n/a	0	n/a	n/a	0
Aggravated Assault	n/a	n/a	n/a	n/a	n/a	0	n/a	n/a	0	n/a	n/a	0
Buglary	n/a	n/a	n/a	n/a	n/a	0	n/a	n/a	0	n/a	n/a	0
Motor Vehicle Theft	n/a	n/a	n/a	n/a	n/a	0	n/a	n/a	0	n/a	n/a	0
Arson	n/a	n/a	n/a	n/a	n/a	0	n/a	n/a	0	n/a	n/a	0
Simple Assault	n/a	n/a	n/a	n/a	n/a	0	n/a	n/a	0	n/a	n/a	0
Intimidation	n/a	n/a	n/a	n/a	n/a	0	n/a	n/a	0	n/a	n/a	0
Theft	n/a	n/a	n/a	n/a	n/a	0	n/a	n/a	0	n/a	n/a	0
Property Damage	n/a	n/a	n/a	n/a	n/a	0	n/a	n/a	0	n/a	n/a	0

	Arrests											
	Residence Halls			Total On-Campus			Non-Campus Buildings			Public Property		
	2021	2022	2023	2021	2022	2023	2021	2022	2023	2021	2022	2023
Liquor Law Violations	n/a	n/a	n/a	n/a	n/a	0	n/a	n/a	0	n/a	n/a	0
Drug Abuse Violations	n/a	n/a	n/a	n/a	n/a	0	n/a	n/a	0	n/a	n/a	0
Weapons Violations	n/a	n/a	n/a	n/a	n/a	0	n/a	n/a	0	n/a	n/a	0

	Disciplinary Actions/ Judicial referrals		
	2021	2022	2023
Liquor Law Violations	n/a	n/a	0
Drug Abuse Violations	n/a	n/a	0
Weapons Violations	n/a	n/a	0



Obtaining Registered Sex Offender Information

Effective January 1, 2003, Zachary's Law requires sheriff departments to jointly establish and maintain the Indiana Sheriffs' Sex Offender Registry to provide detailed information about individuals who register as sex or violent offenders. The purpose of the registry is to inform the general public about the identity, location, and appearance of sex and violent offenders who live, work, or study in Indiana. Under the federal Campus Sex Crimes Prevention Act, any sex offender who is already required to register in any U.S. state must provide notice to any institution of higher education in the state(s) in which that person is employed, carries on a vocation, and/or is a student.

- The Indiana Sex and Violent Offender Registry can be accessed via: <http://www.icrimewatch.net/indiana.php>
- The National Sex Offender Registry links public state, territorial, and tribal sex offender registries together and can be accessed via: <https://www.nsopw.gov/?AspxAutoDetectCookieSupport=1>

Fire Safety



The Higher Education Opportunity Act (HEOA) requires all institutions of higher education that maintain on-campus housing to publish an annual Fire Safety Report. This report contains the information required by the HEOA for Trine University including fire safety practices and statistics of a residential fire log.

Alarm tests and evacuations of residential facilities are performed bi-annually.

Campus Housing/Building Evacuation

In the event of a fire, the University expects all campus community members to evacuate through the nearest exit, closing doors and activating the fire alarm system (if one is present) as they leave. Once safely outside a building, it is appropriate to contact 911 and the Campus Safety department. Students and staff should proceed to the building's designated assembly point. Fire extinguisher training and fire safety tips are provided to all Residence Life staff members.

Residential Life Health and Safety Standards

The Residence Life staff performs Residence Hall Health and Safety inspections every fall and spring semester. These inspections are designed to find and eliminate safety violations. The inspections include, but are not limited to, a visual examination of electrical cords, sprinkler heads, smoke detectors, fire extinguishers, and other life safety systems.





Residential Life Prohibited Items

In addition, each room will be examined for the presence of prohibited items (e.g., sources of open flames, such as candles; non-surge protected extension cords; halogen lamps; portable cooking appliances; etc.) or prohibited activities (e.g., smoking in the room; tampering with life safety equipment; etc.) This inspection will also include a general assessment of food and waste storage and cleanliness of the room. Prohibited items will be immediately confiscated.

The following actions and items listed below are prohibited in residential facilities:

Appliances: In an effort to eliminate circuit overload and potential fire hazards, only UL-approved electrical appliances are allowed. Appliances with an exposed heating element or open coil are prohibited. Appliances not permitted in the residential facilities include grills, space heaters, air conditioners, toasters, toaster ovens, oil lamps, indoor grills (George Foreman style), and portable generators. Refrigerator size is limited to 3.2 cu. ft. or smaller. A surge protector (power strip) should be used with any sensitive electronic equipment. Ceiling lights in the rooms are not to be used for attaching any other fixture or electrical wiring.

Candles, Open Flame and Incense: Burning candle(s), evidence of a burnt candle(s), open flames, and incense are strictly prohibited in any university building. Candles and incense will be confiscated and the owner will be subject to disciplinary sanctions.

Smoking and tobacco products: Smoking, including e-cigarettes, vaping, or use of any tobacco product is not permitted in any facility or on the grounds of Trine University, including parking lots, streets, railroad tracks, and sidewalks adjacent to University property. Evidence of use is subject to disciplinary sanctions.





Fire Statistics

Angola Main Campus Addresses
January 1, 2023 - December 31, 2023

Trine University Fire Safety Systems in Residential Facilities								
Building Name	Address	Fire Alarm Monitoring	Partial Sprinkler System*	Full Sprinkler System**	Smoke Detection	Fire Extinguisher Devices	Evacuation Plans & Placards	Number of Evacuation (fire) drills each year
Alwood Hall	317 Summit St.	Yes	n/a	Yes	Yes	Yes	Yes	1
Bukoff Apt.	1114 Carl Elliot Dr.	Yes	n/a	Yes	Yes	Yes	Yes	1
Cameron Hall	902 Thunder Dr.	Yes	n/a	Yes	Yes	Yes	Yes	1
Campus Village	701 Thunder Dr.	Yes	n/a	No	Yes	Yes	Yes	0
Campus Village	408 Oakwood St.	Yes	n/a	No	Yes	Yes	Yes	0
Campus Village	418 Oakwood St.	Yes	n/a	No	Yes	Yes	Yes	0
Campus Village	422 Oakwood St.	Yes	n/a	No	Yes	Yes	Yes	0
Conrad Hall	315 Summit St.	Yes	n/a	Yes	Yes	Yes	Yes	1
Fabiani Hall 2	1150 Thunder Dr.	Yes	n/a	Yes	Yes	Yes	Yes	1
Mattox Hall	1109 W. Maumee	Yes	n/a	No	Yes	Yes	Yes	1
Moss St. Apt.	810 Moss St.	Yes	n/a	Yes	Yes	Yes	Yes	1
Moyer Apt.	1011 Carl Elliott Dr.	Yes	n/a	Yes	Yes	Yes	Yes	1
Platt Hall	900 Thunder Dr.	Yes	n/a	Yes	Yes	Yes	Yes	1
Reiners Hall	815 Thunder Dr.	Yes	n/a	Yes	Yes	Yes	Yes	1
Seculoff Apt.	1102 Carl Elliot Dr.	Yes	n/a	Yes	Yes	Yes	Yes	1
Stadium Hall	817 Thunder Dr.	Yes	n/a	Yes	Yes	Yes	Yes	1
Trine House	205 Kinney St.	No	n/a	No	Yes	Yes	Yes	1
Trine House	409 College St.	Yes	n/a	Yes	Yes	Yes	Yes	0
Trine House	504 Oakwood	No	n/a	No	Yes	Yes	No	0
Trine House	213 Kinney Street	No	n/a	No	Yes	Yes	No	0
Trine House	212 Woodard	No	n/a	No	Yes	Yes	No	0
Trine House	112 Summit	No	n/a	No	Yes	Yes	No	0
Trine House	108 Summit	No	n/a	No	Yes	Yes	No	0
Trine House	116 Summit	No	n/a	No	Yes	Yes	No	0
Trine House	114 Kinney	No	n/a	No	Yes	Yes	No	0
Trine House	1515 W. Maumee	No	n/a	No	Yes	Yes	No	0
University Center	713 W. Saginaw St.	Yes	n/a	Yes	Yes	Yes	Yes	1
Widmann Apt.	800 Thunder Dr.	Yes	n/a	Yes	Yes	Yes	Yes	1
Wilson Apt.	1022 Carl Elliott Dr.	Yes	n/a	Yes	Yes	Yes	Yes	1

Fire Statistics and Related Information Regarding Fires in Residential Facilities									
Building Name	Address	Total Fires in Each Building			Fire Number	Cause of Fire	Number of Injuries that Required Treatment at	Number of Deaths Related to a Fire	Value of Property Damage Caused by Fires (in Dollars)
		2021	2022	2023					
Alwood Hall	317 Summit St.	0	0	0	n/a	n/a	n/a	n/a	n/a
Bukoff Apt.	1114 Carl Elliot Dr.	0	0	0	n/a	n/a	n/a	n/a	n/a
Cameron Hall	902 Thunder Dr.	0	0	0	n/a	n/a	n/a	n/a	n/a
Campus Village	701 Thunder Dr.	0	0	0	n/a	n/a	n/a	n/a	n/a
Campus Village	408 Oakwood St.	0	0	0	n/a	n/a	n/a	n/a	n/a
Campus Village	418 Oakwood St.	0	0	0	n/a	n/a	n/a	n/a	n/a
Campus Village	422 Oakwood St.	0	0	0	n/a	n/a	n/a	n/a	n/a
Conrad Hall	315 Summit St.	0	0	0	n/a	n/a	n/a	n/a	n/a
Fabiani Hall	800 Thunder Dr.	0	0	0	n/a	n/a	n/a	n/a	n/a
Fabiani Hall 2	1150 Thunder Dr.	0	0	0	n/a	n/a	n/a	n/a	n/a
Mattox Hall	1109 W. Maumee	0	0	0	n/a	n/a	n/a	n/a	n/a
Moss St. Apt.	810 Moss St.	0	0	0	n/a	n/a	n/a	n/a	n/a
Moyer Apt.	1011 Carl Elliott Dr.	0	0	0	n/a	n/a	n/a	n/a	n/a
Platt Hall	900 Thunder Dr.	0	0	0	n/a	n/a	n/a	n/a	n/a
Reiners Hall	815 Thunder Dr.	0	0	0	n/a	n/a	n/a	n/a	n/a
Seculoff Apt.	1102 Carl Elliot Dr.	0	0	0	n/a	n/a	n/a	n/a	n/a
Stadium Hall	817 Thunder Dr.	0	0	0	n/a	n/a	n/a	n/a	n/a
Trine House	205 Kinney St.	0	0	0	n/a	n/a	n/a	n/a	n/a
Trine House	409 College St.	0	0	0	n/a	n/a	n/a	n/a	n/a
Trine House	504 Oakwood	0	0	0	n/a	n/a	n/a	n/a	n/a
Trine House	213 Kinney Street	0	0	0	n/a	n/a	n/a	n/a	n/a
Trine House	212 Woodard	0	0	0	n/a	n/a	n/a	n/a	n/a
Trine House	112 Summit	0	0	0	n/a	n/a	n/a	n/a	n/a
Trine House	108 Summit	0	0	0	n/a	n/a	n/a	n/a	n/a
Trine House	116 Summit	0	0	0	n/a	n/a	n/a	n/a	n/a
Trine House	114 Kinney	0	0	0	n/a	n/a	n/a	n/a	n/a
University Center	713 W. Saginaw St.	0	0	0	n/a	n/a	n/a	n/a	n/a
Widmann Apt.	800 Thunder Dr.	0	0	0	n/a	n/a	n/a	n/a	n/a



Conclusion

Trine University Campus Safety practices a proactive approach to crime prevention. We encourage individuals to take responsibility for their own property and security, and to look out for one another. The University continues to develop new plans and ideas to maintain a safe and secure environment.

Through a cooperative relationship with local law enforcement agencies and community leaders, Trine University has effectively contributed to a community wide effort to combat criminal activity. This results in a safer and more secure environment to study, work and live.

Campus Safety hopes this report helps demonstrate that Trine University is a place where students, their families and our staff can be confident in their safety. Campus Safety invites questions or comments about this report or any programs or services we offer.